

# National Certification Examination Information Bulletin Computer-based Testing

Published December 3, 2014  
VALID December-January, 2015

This edition supersedes all previous bulletin editions, and is valid only through the dates noted above

## PLEASE NOTE:

Beginning January 1, 2014, changes will be made to the candidate appeals process. A mandatory fee will be required when filing a formal challenge and the initial challenge must take place within 30 days of receipt of exam results. Refer to the Appeals Process section of this bulletin for complete details.

## NOTE AVAILABILITY CHANGES BELOW:

2006: Exams based on the 2006 *International Codes* will be offered via paper-and-pencil only through the end of 2014, in states noted on the exam application; as of January 1, 2015, exams based on the 2006 *I-codes* will not be available in any form.

2009: Exams based on the 2009 *International Codes* will be offered via computer-based testing through June 2015, with exceptions noted within; 2009-based paper-and-pencil exams will be available via paper-and-pencil testing until further notice.

2012: Exams based on the 2012 *International Codes* will be offered via both paper-and-pencil and computer-based testing throughout 2015 and beyond.

## FOR EXAMS THROUGH PAPER-AND-PENCIL TESTING:

In 2014, ICC will offer paper-and-pencil exams based on the 2006, 2009, and 2012 *International Codes*. Please see the National Certification – P&P bulletin for information on exams to be taken via paper-and-pencil.

International Code Council  
Certification and Testing Department  
Birmingham District Office  
900 Montclair Road  
Birmingham, AL 35213  
1-888-ICC-SAFE (422-7233), ext. 5524  
certexam@iccsafe.org  
[www.iccsafe.org/inspector](http://www.iccsafe.org/inspector)

## SUMMARY OF BULLETIN CHANGES

Date of Change	Section Affected	Revision
May 14, 2014	National Certification Examinations Based on 2009/2012 International Codes	Revised references for exam 92, Pre-stressed Concrete Special Inspector
May 23, 2014	National Certification Examinations Based on 2009/2012 International Codes	Corrected 2012 IRC store ID and rates
June 3, 2014	National Certification Examinations Based on 2009/2012 International Codes	Updated references for 84 exam
June 26, 2014	National Certification Examinations Based on 2009/2012 International Codes	Revised references for exam 92, Pre-stressed Concrete Special Inspector
June 30, 2014	National Certification Examinations Based on 2009/2012 International Codes	Revised FM references
July 11, 2014	National Certification Examinations Based on 2009/2012 International Codes	Revised references for E3 exams
July 11, 2014	National Certification Examinations Based on 2009/2012 International Codes	Updated plan information for S1, S2, 47, 84, and 92 exams.
July 11, 2014	National Certification Examinations Based on 2009/2012 International Codes	Updated references for 01 exams
August 1, 2014	Feedback and Appeals Process	Updated appeals process and links
August 8, 2014	National Certification Examinations Based on 2009/2012 International Codes	Updated exam length of 2012 02 exam
October 9, 2014	National Certification Examinations Based on 2009/2012 International Codes	Revised reference for 84 Structural Masonry Special Inspector exam
November 4, 2014	National Certification Examinations Based on 2009/2012 International Codes	Revised DR Disaster Response Inspector exam to reflect 60 test items
December 3, 2014	National Certification Examinations Based on 2009/2012 International Codes	Revised references for exam 92, Pre-stressed Concrete Special Inspector

***This bulletin answers most questions raised by examination candidates. Please read it carefully. You will find it a useful reference throughout your registration and examination process.***

Use the checklists and information summaries in this bulletin to familiarize yourself with the testing process. Be sure to completely read this bulletin before scheduling your examination.

**You are responsible** for following all policies and regulations found in this document. Not reading this bulletin does not release your responsibility for following these procedures.

## How do I...

- schedule an exam? Computer-based testing: visit [www.pearsonvue.com/icc](http://www.pearsonvue.com/icc) or call Pearson VUE at 1-800-275-8301
- change my name or address? Fax or mail ICC a letter containing your name, old and new addresses, contact phone number, **and signature**; ICC will advise if additional documentation is needed
- renew my certification? Visit [www.iccsafe.org/renewals](http://www.iccsafe.org/renewals) to enter CEUs and complete the renewal process online
- request a wall certificate (new)? Visit [www.iccsafe.org/inspector](http://www.iccsafe.org/inspector) for a request application
- request a duplicate wallet card or wall certificate? Visit [www.iccsafe.org/inspector](http://www.iccsafe.org/inspector) for a request application
- review an exam I failed? See page 15 for more information on the exam feedback and appeals process
- request special testing accommodations? Computer-based testing: call Pearson VUE at 1-800-466-0450 and ask for special arrangements
- make comments about an exam I took? See page 14 for more information on the exam feedback and appeals process
- reschedule an exam? Computer-based testing: call Pearson VUE at 1-800-275-8301 prior to your scheduled exam—see page 22 for deadlines
- make comments about the testing environment? See page 14 for information on how to comment on test site conditions, both favorable or unfavorable.
- cancel an exam? Computer-based testing: call Pearson VUE at 1-800-275-8301 prior to your scheduled exam—see page 22 for deadlines
- find my exam code (ID)? See pages 24-63 for the exam outline listings in this bulletin
- know what I can take into the exam? See page 17 for the Test Site Regulations section
- obtain the books for my exam? Most references can be purchased at [www.iccsafe.org/store](http://www.iccsafe.org/store); more information is found in the exam outline listings starting on page 24
- access my certification information on ICC's website? Log into [www.iccsafe.org](http://www.iccsafe.org) with your email address and zip code currently on record with ICC—see page 13 for more details

## **Table of Contents**

<i>About Code Council Certification</i> .....	5
<i>Code of Ethics</i> .....	5
<i>Steps to Achieving Code Council Certification</i> .....	6
<i>Certification Examination Timeline</i> .....	7
<i>Certification Categories</i> .....	8
<i>Administrative Rules and Procedures</i> .....	9
<i>Feedback and Appeals Process</i> .....	14
<i>Test Site Regulations</i> .....	17
<i>Computer-based Testing (CBT)</i> .....	20
<i>National Certification Examinations</i> .....	24
<i>Reference Source</i>	

**PLEASE NOTE: ICC National Certification examinations are based on the first printing of the *International Codes*, unless otherwise noted.**

### **International Code Council Vision**

Protecting the health, safety, and welfare of people  
by creating better buildings and safer communities.

### **International Code Council Mission**

Providing the highest quality codes, standards, products, and services  
for all concerned with the safety and performance of the built environment.

**Information contained in this bulletin is deemed accurate as of the time of printing.**

**Contents are subject to change at any time.**

**For the most updated information, visit [www.iccsafe.org/inspector](http://www.iccsafe.org/inspector).**

COPYRIGHT © 2014

by

INTERNATIONAL CODE COUNCIL, INC.

ALL RIGHTS RESERVED. This International Code Council National Certification Examination Information Bulletin® is a copyrighted work owned by the International Code Council, Inc. Without advance permission from the copyright owner, no part of this book may be reproduced, distributed, or transmitted in any form or by any means, including, without limitation, electronic, optical, or mechanical means (by way of example and not limitation, photocopy or recording by or in an information storage retrieval system). For information on permission to copy material exceeding fair use, please contact: International Code Council, Publications, 4051 West Flossmoor Road, Country Club Hills, IL 60478. Phone: 1-888-ICC-SAFE (422-7233).

Trademarks: "International Code Council" and the "International Code Council" logo are trademarks of the International Code Council, Inc.

**Note:** Certification and examination requirements, including registration/scheduling, dates, locations, fees, and references are subject to change. Please make sure that you have the most current information before registering for/scheduling any examination. For up-to-date information on Code Council certification and examinations, go to [www.iccsafe.org/inspector](http://www.iccsafe.org/inspector) or call 1-888-ICC-SAFE (422-7233). For fastest service, for general questions, dial 0; for specific information on your certification, dial ext. 5524.

## About Code Council Certification

The Code Council certification program is the oldest, largest, and most prestigious credentialing program for construction code administration and enforcement professionals in the United States. Code Council certification examinations are maintained to the highest standards and include continuous review by committees of experienced professionals.

Becoming Code Council-certified is a significant personal and professional accomplishment, and is a key step toward enhanced professional stature. Code Council certificate holders demonstrate a confirmed commitment to protect the public health, safety, and welfare.

Many building departments and state agencies that regulate code enforcement personnel recognize Code Council certification. However, the Code Council cannot guarantee that a specific governmental agency will accept or recognize a Code Council certification. You should first contact the applicable agency regarding specific licensing and employment requirements.

Certification and examination information, including registration/scheduling requirements, dates, locations, fees, and references, are subject to change. **Candidates should make sure they have the most current information before registering for/scheduling a Code Council examination by going to [www.iccsafe.org/inspector](http://www.iccsafe.org/inspector).**

## Code of Ethics

It is the policy of the Board that each active certificate holder shall agree in writing to comply with the following Code of Ethics; and shall agree that failure to comply shall subject their certification to suspension or revocation by the Board:

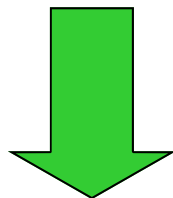
The protection of the health, safety and welfare of the public by creating safe buildings and communities is the solemn responsibility of the International Code Council (Code Council) and all who participate in Code Council activities. Recognizing this, the Code Council advocates commitment to a standard of professional behavior that exemplifies the highest ideals and principles of ethical conduct. The governing concepts embodied in this philosophy are characterized herein, for the benefit and guidance of those so engaged, and for the enlightenment of the public so served.

Each individual participating in a Code Council activity shall:

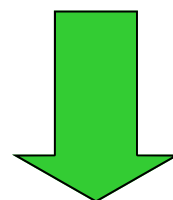
- *Support the mission of the Code Council to provide the highest quality codes, standards, products and services for all concerned with the safety and performance of the built environment.*
- *At all times, act in an ethical manner, comply with the ethical rules and regulations related to his or her profession, and avoid conflicts of interest.*
- *Demonstrate integrity, honesty, and fairness while participating in Code Council activities.*
- *For Code Council certified individuals, maintain professional competence in all areas of employment responsibility and encourage the same for colleagues and associates.*
- *Act in accordance with the Bylaws and Policies of the International Code Council, including this Code of Ethics.*

## Steps to Achieving Code Council Certification

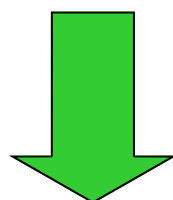
Read and understand the bulletin, which contains all of the information you'll need throughout the pre- and post-exam process



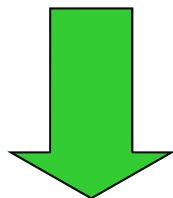
Determine which exam you want to take, and through which method (computer-based testing in this bulletin, or paper-and-pencil testing in National Certification—P&P bulletin)



Follow the registration requirements beginning on page 21



Obtain the approved references for the exam, and study these references well in advance of the exam

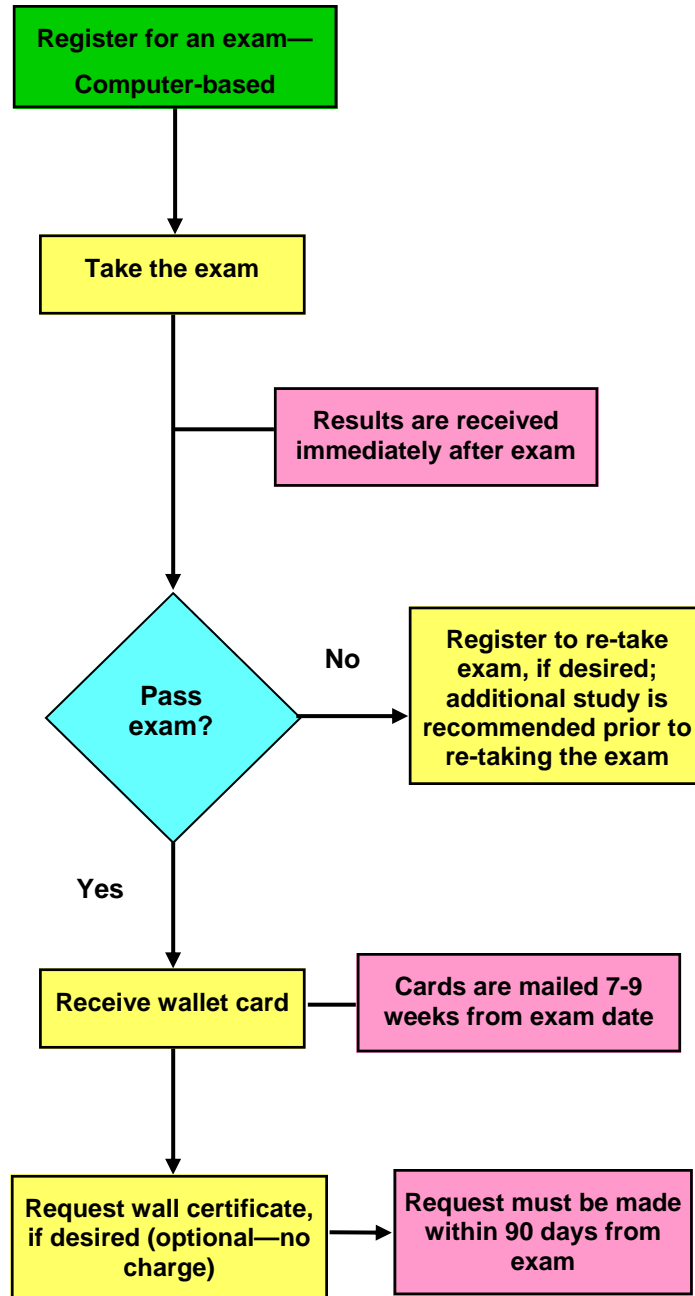


Pass the exam and meet any additional requirements, if applicable

Some certification categories may have additional requirements that include, but are not limited to, passing multiple examinations, education/work experience, submitting affidavits, and/or additional fees. Please be sure to thoroughly read the detailed information on those examinations you elect to take. For the most up-to-date requirements and detailed information on Code Council certification examinations, go to [www.iccsafe.org/exams](http://www.iccsafe.org/exams).

# Certification Examination Timeline

The timeline below will give you a general idea of how long it will take to achieve certification in most categories. Please remember that your experience may be shorter or longer than that below, dependent on individual circumstances.



# Certification Categories

Below are Code Council national certification categories currently available, required examinations, and corresponding exam IDs. Examination listings begin on page 24.

## Exam Certification/Examination ID

### Residential Inspector

- B1 Residential Building Inspector
- E1 Residential Electrical Inspector
- M1 Residential Mechanical Inspector
- P1 Residential Plumbing Inspector

### Commercial Inspector

- B2 Commercial Building Inspector
- E2 Commercial Electrical Inspector
- M2 Commercial Mechanical Inspector
- P2 Commercial Plumbing Inspector

### General Plans Examiner

- B3 Building Plans Examiner
- E3 Electrical Plans Examiner
- M3 Mechanical Plans Examiner
- P3 Plumbing Plans Examiner
- R3 Residential Plans Examiner
- RF Residential Fire Sprinkler Inspector/Plans Examiner

### Code Enforcement

- 14 Permit Technician
- 75 Zoning Inspector
- 64 Property Maintenance and Housing Inspector
- C1 Coastal and Floodplain Construction Inspector \*\*\*
- 21 Accessibility Inspector/Plans Examiner
- DR Disaster Response Inspector \*\*\*
- FG Fuel Gas Inspector

### Fire

- 66 Fire Inspector I \*\*\*
- 67 Fire Inspector II \*\*\*
- F3 Fire Plans Examiner
- FM Certified Fire Marshal (CFM) \*\*\*
- CA Commercial Fire Alarm Inspector
- CN Commercial Fire Alarm Plans Examiner I
- CR Commercial Fire Alarm Plans Examiner II \*\*\*
- CF Commercial Fire Sprinkler Inspector
- CP Commercial Fire Sprinkler Plans Examiner

## Exam Certification/Examination ID

### Fire Extinguisher Technician

- FE Certified Portable Fire Extinguisher Technician
- FK Pre-engineered Kitchen Fire Extinguishing System Technician
- FN Pre-engineered Industrial Fire Extinguishing System Technician

### Energy Conservation

- 77 Commercial Energy Inspector
- 78 Commercial Energy Plans Examiner
- 79 Residential Energy Inspector/Plans Examiner
- EA Commercial Energy Inspector with ASHRAE 90.1
- EB Commercial Energy Plans Examiner with ASHRAE 90.1

### Green Building

- G1 Green Building—Residential Examiner
- G2 IgCC Commercial Inspector
- G3 IgCC Commercial Inspector with ASHRAE 189.1
- G4 IgCC Plans Examiner
- G5 IgCC Plans Examiner with ASHRAE 189.1

### Certified Building Official (CBO) \*\*\*

- 01 Legal/Management Module
- 02 Technology Module

### Special Inspector

- 92 Prestressed Concrete Special Inspector \*\*\*
- 84 Structural Masonry Special Inspector
- 86 Spray-applied Fireproofing Special Inspector
- S1 Structural Steel and Bolting Special Inspector
- S2 Structural Welding Special Inspector \*\*\*
- EC Soils Special Inspector
- 47 Reinforced Concrete Special Inspector \*\*\*

\*\*\* This examination has prerequisites or additional requirements to achieve certification. Please refer to the Exam Description section of the bulletin starting on page 24.



# Administrative Rules and Procedures

## How often can I take an exam?

During any six (6) month period and for any one certification category, you may take the exam a total of two (2) times. You will be responsible for payment of the exam fee for every exam you take. For example, a candidate takes the Residential Building Inspector exam on January 1 and fails, then re-tests on March 1 and fails. The candidate cannot retake this exam until six months from January 1 (July 1).

Taking the examination in one category has no effect on testing for the six-month period for another category. For example, if you take the Residential Building Inspector examination and fail it, you would be allowed to take a Commercial Building Inspector or, for example, one of the Plumbing Inspector examinations, without regard to the six-month period for your Residential Building Inspector examination.

## How is my exam scored?

**What is a passing score?** A passing score is the score set by the ICC and/or with the Exam Development Committee (EDC) as the minimum score needed to pass the exam. This score is technically called a scale score and is set as 75 for the National Certification exams.

**How is a passing score set?** A passing score is set as part of the process at the Exam Development Committee. This part of the process involves setting item-level cut-scores, using the expert judgment of the Subject Matter Experts (SMEs) who are at the EDC. These experts determine what the minimum is that the candidate needs to know in order to obtain the certificate, and a passing score. If you'd like to participate as an SME, visit [www.iccsafe.org/certification](http://www.iccsafe.org/certification) and click on "Exam Development Committees."

**What is a scale score?** A scaled score transforms a raw test score (the number of test questions answered correctly) into other measurement units, called a scale score. However, please know that a scale score is not the number of questions answered correctly, nor the percentage of questions answered correctly.

**Is the current test more or less difficult than prior tests, or future tests?** There are multiple forms of the ICC examinations. While these forms were developed from the same set of content specifications, the levels of difficulty of the forms will vary because different exam questions appear on different forms. Some of these questions by their nature (and designated in the cut-score) are more difficult than others, even though they pertain to the same section of the exam. It would be unfair to require a candidate taking a collection (form) of somewhat more difficult questions to answer as many questions correctly as a candidate who took an easier form. So, we use a statistical procedure known as scaling to correct for differences in test form difficulty.

Think of it this way. Let's say an elementary school hired the ICC to create an exam to test for knowledge of aspects of mathematics. Further, let's say the exam was called "Addition and Subtraction," and the Exam Information Bulletin states it is a 100-item exam.

Look at the first ten questions of two different exam forms, both of which measure the concept of "Addition and Subtraction":

Question	Exam Form 1	Question	Exam Form 2
1.	$2 + 4 =$	1.	$6 + 9 =$
2.	$6 + 4 =$	2.	$16 + 26 =$
3.	$7 - 3 =$	3.	$18 - 16 =$
4.	$18 + 15 =$	4.	$23 + 99 =$
5.	$16 - 4 =$	5.	$86 - 44 =$
6.	$8 + 8 =$	6.	$5 + 1 =$
7.	$4 + 9 =$	7.	$29 + 88 =$
9.	$4 + 15 =$	9.	$48 + 96 =$
10.	$7 - 4 =$	10.	$55 + 38 =$

As you can see, the questions on Form 2 are a bit harder than the questions on Form 1. If these were both 100-item exam forms with such a continuing mix of items, it would be unfair to require the students who were administered Exam Form 2 to answer the same number of questions correctly in order to pass.

**Why scale the scores?** If we simply reported the total number of questions answered correctly (the raw score), there would be a different passing score for each form of the test (because of those differences in difficulty). This would be confusing to candidates. So, we convert these raw scores to a constant scale such that, say, the designated 75 continues as the minimum score required to pass regardless of the form administered, knowing the number of correct answers needed to pass varies from form to form and from year to year.

**What is reported?** Scaled scores of 75 or above are reported as PASS. The ICC does not report the numeric score; the score report simply indicates a passing score by saying PASS. Those who fail the exam are provided the numeric scaled score, along with diagnostic information of their performance on major content areas. This information is for self-evaluation only.

### **Does the Code Council require a candidate to have a certain level of experience or education before taking an examination?**

No. Most Code Council examinations are open to all individuals with no prerequisite for experience or education. Code Council certification should be used as one of several measures of an individual's qualifications when screening applicants for a position. Inspectors should possess the right mix of technical knowledge, education, and related experience. Because proper weighting of the relative importance of these three qualifications is a subjective decision, determining the emphasis of Code Council certification is most appropriately performed at the local level by the building official. For this reason, the Code Council does not specify education or experience requirements for certification applicants for most categories. However, the Reinforced Concrete Special Inspector has additional requirements after passing the certification exam.

### **Which exam(s) should I take?**

As requirements for employment differ from jurisdiction to jurisdiction, the Code Council cannot recommend specific certifications to you. We strongly encourage you to contact the jurisdiction in which you wish to work for more information on their specific needs, and couple this information with the exam-specific listings in this bulletin.

## Is a Code Council certification the same as a license?

A license is a permit to work in a particular occupation, issued as a result of state or local legislation. Code Council certifications are voluntary certifications. Many jurisdictions require Code Council certification in their administrative regulations. Check with your state or local agency to find out if your state recognizes Code Council certifications.

## What is the best way to prepare for an examination?

The best way to prepare for an examination is through the study of codes and standards. Code Council seminars, self-study workbooks, code commentaries, and textbooks may be helpful. Practice examinations for many categories are available for a fee from the Code Council at [www.icccampus.org](http://www.icccampus.org). These may be useful to those candidates who need to refresh their skills in taking exams. It is important to realize, though, that the difficulty level of the practice exams may not represent that of the actual Certification exam.

Sample questions are available for most exams at [www.iccsafe.org/exams](http://www.iccsafe.org/exams); these items are similar to those used on the exams, but will never appear on any exam form. However, nothing can substitute for studying the code and on-the-job experience of code use and application. You must devote the time needed to understand the code and master the ability to apply it.

## When can I test?

Computer-testing is administered frequently at over 350 sites across the nation. To get the most updated information, go to [www.pearsonvue.com/icc](http://www.pearsonvue.com/icc).

## How often can I test?

There is no mandatory waiting period before retaking a failed exam. However, it is strongly recommended that you allow time to study the approved references before registering to test a second time.

## When will I receive my results?

Results for examinations taken electronically are available immediately after completion of the examination.

For most certification categories, candidates will automatically receive a Code Council wallet card within seven to nine weeks after they pass the examination. Some categories have additional requirements prior to receiving the full certification. Wall certificates are available upon request.

## I didn't receive my pass letter or wallet card. Can I have another mailed to me?

Yes, but the item must be requested within 90 days from the date of the passed examination to have another mailed without a fee. If a resend of a pass letter or wallet card is requested after 90 days from the exam, a fee will be charged. For fees and other optional services, go to [www.iccsafe.org/inspector](http://www.iccsafe.org/inspector).

## **What type of question format will be included in the examination?**

Test questions are in four-option, multiple-choice format, with one answer on each question scored as correct. Due to the rigorous psychometric processes used by the Code Council in exam development, questions do not follow patterns (e.g., “the most common answer is ‘B’”).

## **Are the examinations open book?**

Yes, most exams are open book. To get the most updated information on examinations, go to [www.iccsafe.org/exams](http://www.iccsafe.org/exams).

## **Can't I just look up all of the answers in the books?**

Because of the time constraints, you will not have time to look up all of the answers. For those answers you must look up, you must be VERY familiar with the references to avoid wasting time searching for information. First impressions are often the most accurate, but you may change your answers if time allows.

## **How long are the examinations?**

The length and allowed time varies depending upon the subject matter. To get the most updated information on examinations, go to [www.iccsafe.org/exams](http://www.iccsafe.org/exams).

## **How many examinations can I take at one administration?**

For computer-based exams, in most cases you may take two exams in one day, as long as each examination is only two hours in length.

## **Should I guess if I don't know the answer to a question?**

There is no guessing penalty, so it is to your advantage to answer every question. Remember to base your answers on the listed references for each exam, not solely on long-time field practices.

## **How do I renew my certification?**

In most cases, you will need to have a certain number of continuing education credits (CEUs) to renew your certification. For more information on keeping your certification current, go to [www.iccsafe.org/renewals](http://www.iccsafe.org/renewals).

## **If I pass one CBO examination but fail the other, do I need to retake both exams?**

A candidate who passes one exam has three years to pass the other without retaking the passed exam. After three years, the candidate would need to retake and pass both examinations.

## **Can I use my VA Montgomery Bill benefits to pay the fees for taking the examinations?**

Many Code Council exams have been approved for VA reimbursement. To obtain more information on educational benefits for veterans, call 1-888-GIBILL1 (442-4551).

## How can I access my certification information on the ICC website?

Log into [www.iccsafe.org](http://www.iccsafe.org) with your email address on record with ICC; your zip code on record is your password. Click on “My ICC” and then “My Certifications” on the navigation bar. Do not create a new account on the renewal site, as this new account will not link you to your existing information.

## How do I get a ProBoard-stamped certificate for Fire Inspector I or II?

If you pass an exam on or after January 1, 2013, you may order a wall certificate with the ProBoard stamp at no charge. Go to [www.iccsafe.org/Accreditation](http://www.iccsafe.org/Accreditation) and choose the Forms & Applications tab.

## When are exams updated to the newest codes?

Examinations are updated to the latest edition of the *International Codes*<sup>®</sup> effective January 1 of the year following the date of publication to allow time for candidates to become familiar with the new code provisions.

## Who can see my candidate records?

All Code Council certification examination candidates have certain rights in relation to their educational records. To view the complete Certification Records Policy, visit the Code Council website at [www.iccsafe.org/inspector](http://www.iccsafe.org/inspector).

## Can my exam score be cancelled?

The Code Council reserves the right to revoke or withhold any examination scores if, in its sole opinion, there is adequate reason to question their validity. Reasons are:

- Giving or receiving assistance with answers during testing
- Using unauthorized materials during testing
- Failing to abide by the rules presented or directions from the proctor(s)
- Attempting to, or removing examination materials or questions from the testing center.

In cases of examination irregularities which are suspected at testing centers, the scores of the individual(s) involved will not be released unless approved by the Code Council. Additional sanctions may be authorized by the Board, which may include restrictions on retesting for up to three (3) years.

Some scores may be rendered invalid because of circumstances beyond the examinee’s control, such as faulty examination materials or mistiming. These situations will be investigated; when such occurrences result in cancellation of an examinee’s scores, the Code Council will arrange for a makeup examination for the examinees concerned.

# Feedback and Appeals Process

ICC has developed a three-step process for test-takers to comment on or challenge the results of their exam. These are:

- 1) ICC Certification & Testing staff review,
- 2) appeal to Exam Development Committee (EDC), and
- 3) appeal to the Certification Committee (CC).

The form for providing feedback and starting the appeals process is available at the conclusion of your exam at Pearson VUE (if testing via computer) or on the ICC website at [www.iccsafe.org/form](http://www.iccsafe.org/form).

Submit completed forms, fees, etc. to:

International Code Council  
ATTN: Candidate Services Coordinator  
900 Montclair Road  
Birmingham, AL 35213  
(205) 599-9884 (facsimile)  
(888) 422-7233, ext. 5552 (toll-free)

For questions or comments about the appeals process or your exam experience, please contact: [candidateservices@iccsafe.org](mailto:candidateservices@iccsafe.org).

**Please note: If you re-take a failed exam on which you have submitted an appeal, you will forfeit your appeal opportunity for that exam.**

## Step 1: ICC Certification & Testing Staff Review

**Why:** To have ICC Certification & Testing staff review comments or challenges on specific exams or exam items

**How:** You must submit a Comment / Challenge form to ICC with your signature (form available at [www.iccsafe.org/form](http://www.iccsafe.org/form) or upon request after your exam at a Pearson VUE test site). This form must contain a separate and complete statement of each item upon which your comments are based, and must be submitted to the following address:

International Code Council  
Candidate Services Coordinator  
900 Montclair Road  
Birmingham, AL 35213  
205-599-9897 Fax

**Fee:** \$100 (includes all additional steps of appeals process)

**Deadline:** You must submit the above form to ICC within 30 days of receiving your exam results

**Response:** You will be mailed a response from ICC staff within 15 business days from receipt of the form by ICC; a request for staff review is based solely upon the most recent examination taken.

**Step 1 must be completed prior to Step 2.**

## **Step 2: Appeal to Exam Development Committee (EDC)**

Why:	To appeal the results of the ICC Certification & Testing staff review to the EDC; you can read more about the EDC and their function at <a href="http://www.iccsafe.org/certificationPages/EDC.aspx">http://www.iccsafe.org/certificationPages/EDC.aspx</a>
How:	You must submit your request in writing to ICC, at the following address:  International Code Council Candidate Services Coordinator 900 Montclair Road Birmingham, AL 35213
Fee:	No additional fee. Included in initial appeals fee
Deadline:	You must submit your written request within 30 days of the date of the ICC staff denial letter
Response:	A response will be provided to you in writing after the next available EDC meeting, which can take as long as 120 days; an appeal to EDC is based solely upon the most recent examination taken

**Step 2 must be completed prior to Step 3.**

## **Step 3: Appeal to the Certification Committee (CC)**

The Certification Committee (CC) serves as the oversight advisory board to the exam development committees; you can read more about CC and their function at <http://www.iccsafe.org/Certification/Pages/default.aspx>

Why:	To provide you a final level of appeal
How:	You must submit your request in writing to ICC, at the following address:  International Code Council Candidate Services Coordinator 900 Montclair Road Birmingham, AL 35213  The hearing will be held from 60 days to 6 months from your request, dependent on availability of CC members; you will receive a minimum 30 days written notice as to date, time, and place of hearing, and you can participate in person, at your expense, or at no charge via teleconference; you will have an opportunity to present documentary or oral evidence, or to provide witnesses in support of the appeal, by participating in the CC hearing
Fee:	No additional fee. Included in initial appeals fee
Deadline:	You must submit your written request within 30 days of the EDC challenge denial letter date
Response:	You will be mailed results of the hearing within 15 days of the date of the hearing

**Important: The CC is the final level of appeals**

## Optional Services

### Optional: Review Session

**Why:** To review missed test questions; you must be within **ten (10)** points of passing score. This is not an opportunity to change answers, ask questions, or see the correct answers, but only to review those items scored as incorrect, along with the answers you marked, for use in completing a formal challenge if you wish. A review session is based solely upon the most recent examination taken.

**How:** You must contact Pearson VUE to set up a time for your review, and submit payment to Pearson VUE at time of registration

**Fee:** \$100.00 (without a challenge)  
No Charge if a challenge is issued after the review session  
**NOTE:** you do not need to complete a review session to challenge your exam.

**When:** You must schedule your review session within 30 days from your exam

**Response:** You will not receive a response based solely on the review session; instead, you will be provided a response to any items on which you submit comments during your review session

**Note:** Reviews are completed at a Pearson VUE test site. If you are eligible for a review session and wish to schedule one, call Pearson VUE at 1-800-275-8301.

Review sessions are limited to one half of the original examination time. For a two-part examination, reviews are limited to one half of the original time for the portion of the examination which was failed. Candidates may bring in any of the texts listed in the Examination Information Bulletin as required references for the examination review.

### Optional: Hand Score

**Why:** To verify the accuracy of the candidate's reported score; please be aware that ICC and Pearson VUE follow very careful scoring procedures to ensure accuracy prior to issuance of score reports

**How:** You must complete the Hand Score Request form (at [www.iccsafe.org/inspector](http://www.iccsafe.org/inspector)) and submit this form with original signature and copy of your score report to ICC

**Fee:** \$25.00

**Deadline:** You must request a hand score within 90 days from your exam

**Response:** You will be mailed the results of the hand score within 15 days from receipt of your request

**Impact:** Please know that it is very rare that a score will be changed based on a hand score, as the automated scoring systems are very accurate; a request for hand score is based solely upon the most recent examination taken



# Test Site Regulations

The rules and procedures below are strictly enforced at all Code Council examinations. Following these rules guarantees the security of examination materials, provides reliable test results, and increases the public's trust of certified professionals.

## What should I bring to the test site?

For electronic examinations, examinees must provide their testing confirmation number (that was provided by the Pearson VUE representative at the time of exam registration) at the testing site on the exam day in order to be admitted to take the exam.

For electronic examinations, **the name on the exam reservation must match the name on the ID provided. If it does not, you will not be allowed to test, and will forfeit your exam fee. Neither ICC nor Pearson VUE can make an exception to this policy.** If you are unable to present identification as required by the ICC and Pearson VUE, or have questions about what will be allowed, you must call Pearson VUE prior to your scheduled exam to make other arrangements.

Examinees may bring the following items to the examination:

- Reference(s) for the appropriate exam that are listed in this Examination Information Bulletin—**no other reference material will be allowed into the testing center:**  
Please make sure the reference(s):
  - Are bound (either original bound book, three-ring binder, or stapled). **Photocopies of copyrighted materials are not allowed.**
  - Have notes written in ink or highlighted in code sections only
  - Have permanently attached tabs (tabs that can't be removed without destroying the page).
- Magnifying glass
- Eyeglasses, if necessary
- Architects' scale or rule
- Battery-operated calculator that is:
  - Nonprogrammable
  - Not capable of storing examination information
  - No ribbon or paper printing capabilities
- Foreign language/English translation dictionaries, if needed

## What should I leave at home?

1. Any kind of ink (ballpoint, felt-tip, gel, etc.) pens, colored pencils, highlighters, writing paper, or briefcases
2. Personal items such as purses, wallets, or watches—lockers are available at Pearson VUE for small items, but will not accommodate laptops, briefcases, or large purses or bags
3. Calculators with print capability and/or that store formulas
4. Copying, recording, or photo devices
5. Cell phones, beepers, radios, MP3 players, and/or PDAs

## What are test proctors and what do they do?

The test proctors have two main jobs: they give the examinations and make sure the exam materials at the test site are protected. Proctors are well-trained and treat candidates with respect, and in turn, expect the same level of respect from candidates. Threatening a proctor or interfering with the administration of an examination at *any* time may be considered a criminal offense and punishable by law. In addition, proctors cannot discuss contents of the exam or reference materials with a candidate.

Proctors have the right to remove a candidate's test and ask the individual to leave the building if the candidate:

- Gives or receives help during the examination
- Attempts to remove exam materials or notes from the room
- Creates a disturbance
- Copies or attempts to copy examination questions or answers
- Is found to have prohibited materials (cell phone, recorder, etc.) during the exam

If a candidate is asked to leave the test site for any reason, the candidate will not receive a refund, may jeopardize their right to take a Code Council examination in the future, and may face possible prosecution.

## What if I have problems at the examination site?

Code Council testing procedures are designed to minimize negative conditions at the examination site such as bad lighting, excessive noise, or uncomfortable temperature conditions. In unlikely cases where such conditions may occur, the required passing score will not be changed. Should you feel your exam experience or conditions at the test site to be unfavorable, notify the proctor. If you would like to file a complaint, you must ensure that an Incident Report (IR) is created by the test personnel, and then follow up using the appeals process. In order for the Code Council to investigate and respond to your complaint, an IR must be filed before you leave the test site. Once the investigation is completed, you will receive a letter of determination from the Code Council.

General comments regarding the exam experience are encouraged. Please forward your comments to [candidateservices@iccsafe.org](mailto:candidateservices@iccsafe.org).

Please note all comments will be read; however, you will not receive a written response.

## What does the Code Council expect of me?

Examinees are responsible for arriving at the exam site on the proper date, at the proper time, and with proper identification. You should determine in advance the exact location of the test site, how to get there, and how much time it will take you to get to the site. Examinations will be given only on the date and time scheduled. Please note: if you are taking a computer-based exam, your Pearson VUE confirmation letter automatically adds 30 minutes to the actual exam time (as noted in this bulletin) for you to complete the tutorial and exit surveys.

Please arrive at the test site with required reference(s), if desired, for use during the exam. Required examination references are listed with the examination outlines found in this bulletin. References for examinations are not supplied by the Code Council or the testing center.

**Examinees must know, understand, and adhere to all of the regulations governing Code Council examinations as listed in this bulletin.**

Arrive at the exam site at least **30 minutes** before the examination is scheduled to begin. Remember, it is your responsibility to already be familiar with the regulations governing Code Council examinations.

## What can I expect at the test site?

Watch this short video [What to expect in a Pearson VUE test center](#)

### Before the Exam

The examination proctor will check your identification, have you sign in, and may assign you a seat. The examination proctor will explain the procedures for taking the examination; answer questions related to taking the exam and provide notification to begin the examination.

Metal detectors may be randomly used to search examinees entering and/or leaving the exam room. You will be asked to empty all of your pockets and place personal items in a locker. Proctors may inspect all materials an examinee carries into and from the exam room. If your reference materials do not meet test site regulations (relating to tabs, pencil notes, etc.), **you will not be allowed to take these references into the exam room.** You will still be allowed to test, but without these materials.

The Code Council randomly videotapes examination sessions.

You are not allowed to write or mark in or on your reference books during the examination. The proctor will give you a whiteboard and markers for use during the exam.

While the examination is being administered, you are not allowed to leave the building and return to the exam room. If you wish to leave the exam room for any reason, you must receive permission from the proctor and turn in all of your examination materials and references to the proctor. Only one examinee at a time is allowed outside the exam room, and you are not allowed additional test time for time spent outside the exam room. The exam countdown clock **will not stop** during any absence from your seat.

### During the Exam

You are not allowed to communicate, verbally or nonverbally, with other candidates during the examination, and you may not share references.

It is **highly recommended** that if you are taking a computer-based exam, especially for the first time, you complete the tutorial available to you at the beginning of your exam. The time spent on the tutorial does not count against your exam time. You will receive important information about how to keep track of your time remaining, how to mark items for review, where to find the number of the question you are on, and more.

For electronically administered examinations, there is an optional clock on the computer that counts down to display the time remaining. (Information on turning on the clock is available in the tutorial prior to the exam.) When the time limit is up for the examination, the computer will end the test.

### After the Exam

If you pass your examination, you cannot retake the examination you passed except as necessary for recertification. If you do not pass your examination and wish to comment on your experience, please see the section of this bulletin titled "Feedback and Appeals Process."

# Computer-based Testing

## How do I register for a computer-based test?

Computer-based certification examinations are administered for the Code Council by Pearson VUE (formerly Promissor), a professional test administration company. **To register to take a Code Council computer-based certification exam, visit Pearson VUE's website at [www.pearsonvue.com/icc](http://www.pearsonvue.com/icc) or call Pearson VUE at 1-800-275-8301 (only for non-DBPR candidates). You must provide the EXAM ID and EXAM TITLE, whether registering online or by telephone.**

Online reservations are available 24 hours a day, 7 days a week. The Code Council encourages candidates to register online, for your convenience. You must provide an e-mail address to schedule an exam online, and Pearson VUE will e-mail you a confirmation letter containing the date and time of your exam, along with test day instructions. **It is your responsibility to check this confirmation letter to ensure the exam listed is the one you wish to take.**

Pearson VUE's customer care reservations and customer service lines are open Monday through Friday from 8:00 a.m. to 11:00 p.m. (Eastern Time), Saturday from 8:00 a.m. to 5:00 p.m., and Sunday from 10:00 a.m. to 4:00 p.m. When you call to make your examination reservation, a representative will help you select the optimal test date and location for your schedule, provide instructions and directions, and give your examination reporting time. Walk-in testing is not available.

You may make an exam reservation up to one business day prior to your desired exam date, depending on space availability at the test center.

**You must have the following information available at the time you are registering for a Code Council computer-based certification examination:**

1. Exam ID and title. Exam IDs and titles can be found in this bulletin
2. Your full name, address, and home and work telephone numbers
3. Selected examination date and location of the area you desire to take the exam
4. Your score report, if you are retaking the examination (only for those candidates who originally tested through Pearson VUE)
5. Your credit card or payment information

Please make sure that the name you use to register for your exam exactly matches your chosen form of identification, i.e., your driver's license, if that is the identification you will use when you take the exam. You will not be allowed to take the exam if your exam registration and identification do not match.

## What if I need to register more than one person?

If you need to schedule four or more individuals for exams, you can do so through group scheduling at Pearson VUE. Call Pearson VUE at 1-800-275-8301, and tell the call center representative at the beginning of the call how many candidates that need to be scheduled for exams. You must have the following when you call: candidate demographics (name, address, and home and work telephone numbers), exam ID and titles of the exams for which you're registering, and payment information. You may also email this information to [pvgrouppreservations@pearson.com](mailto:pvgrouppreservations@pearson.com).

## Where are the test sites?

To locate test sites in your area, visit the Pearson VUE website at [www.pearsonvue.com/icc](http://www.pearsonvue.com/icc) for an updated listing of sites. Be aware that test sites are subject to change.

## How do I pay for my exam?

Examination fees must be paid by credit card, debit card (issued through VISA or MasterCard) or electronic check at the time a reservation is made, NOT at the test center. Candidates who do not have or do not wish to use a credit card, debit card, or personal checking account may choose to prepay their examination fees using a voucher. Vouchers can be purchased online at [www.pearsonvue.com/vouchers/pricelist/icccert.asp](http://www.pearsonvue.com/vouchers/pricelist/icccert.asp) by credit card, either singly or in volume. To redeem a voucher as payment when scheduling a test, simply indicate “voucher” as the payment method and provide the voucher number. **All vouchers are pre-paid, non-refundable, and non-returnable.** Vouchers expire twelve (12) months from the date they are issued, and voucher expiration dates cannot be extended. The exam must be taken by the expiration date printed on the voucher.

## Do I have to be a computer whiz?

Examinations are administered on a personal computer (PC). Candidates are not required to have any computer knowledge to take the examination on the PC. Before you begin your test, you may take up to 15 minutes to practice with the sample questions. Timing of the examination does not begin until you look at the first question of the actual examination. You may change your answers, mark answers for review, go back to skipped questions and review your test, if you have time remaining.

## When are exams available?

Code Council certification examinations are administered nationally, Tuesday through Saturday (exceptions noted below). Testing sessions are generally held at 8:00 a.m. and 1:00 p.m. Some test centers are open daily, while others are open on specific days of the week. In some locations, exams are administered on a monthly basis. Pearson VUE offices are closed in observance of the following holidays:

- New Year's Day
- Martin Luther King, Jr. Day
- Memorial Day
- Independence Day
- Labor Day
- Thanksgiving (including Friday following holiday)
- Christmas Day and the day after Christmas

## What if the weather's bad?

Test administrations will be delayed or canceled only in emergencies. If severe weather or a natural disaster makes the test center inaccessible or unsafe, the test administration may be canceled. Call Pearson VUE at 1-800-274-2615 to check weather or other emergency delays.

## How do I cancel or reschedule my test?

To change or cancel your reservation without monetary penalty, you must notify Pearson VUE two business days before the time and date of your scheduled examination. When this is done, the fee from your first appointment will be applied to your new test date. If you call Pearson VUE less than two business days before your scheduled examination, you will be charged the full examination fee. The fee from your first appointment will be owed in addition to the fee for the new test date.

## What if I can't make it to my test?

There are no refunds for examinations not taken. All candidates seeking excused absences must submit written verification and supporting documentation of the situation to Pearson VUE within 14 days of the original examination date. Illness excuses must be written by the attending physician. Inclement weather is not acceptable as an excused absence. If, on the day you are scheduled to test, you are unable to attend the examination for which you were scheduled, you may be excused without monetary penalty for the following reasons:

1. Documented illness, either yourself or immediate family member;
2. Death in the immediate family;
3. Disabling traffic accident;
4. Court appearance or jury duty; or
5. Military duty.

Written verification and supporting documentation for excused absences must be submitted to the Pearson VUE Program Coordinator via fax or mail within fourteen (14) days of the original examination date.

Pearson VUE  
c/o Candidate Services  
P.O. Box 8588  
Philadelphia, PA 19101  
Fax: 888-204-6291

If you are absent from an examination that you were scheduled to attend, and you did not reschedule or cancel according to the policy, you will owe Pearson VUE the full examination fee for that missed examination.

## When do I get my test results?

After completing the test, candidates will raise their hands and the assessment center manager will retrieve the unit for immediate scoring. Failing candidates will be provided with diagnostic information on their performance on major content areas of each examination taken. This information is not used to determine whether a candidate passes or fails; it is for self-evaluation only. Candidates who pass will be notified with the word "PASS." Refer to Examination Scoring on page 10.

## What if I have special needs?

Pearson VUE certifies that it shall comply with the provisions of the Americans with Disabilities Act (ADA). If you need special arrangements for testing, please call 1-800-466-0450 to request special testing services. This telephone number is available for reservations Monday through Friday, 7:00 a.m. to 6:00 p.m. CST.

All examination sites have access for candidates with disabilities. For complete information on Pearson VUE ADA accommodations, visit [www.pearsonvue.com/accommodations](http://www.pearsonvue.com/accommodations). Select the test program (International Code Council) for complete instructions, including the Guidelines for Candidates and required documentation.

Pearson VUE will provide auxiliary aids and services, except where it may fundamentally alter the examination or results. It is recommended that you submit a written request for special test arrangements and services approximately two to three weeks in advance of your desired test date. In addition, candidates should indicate when registering for re-examination that special arrangements were made or services used for the prior test administration, and that these services will be needed again for the upcoming test date. Supporting documentation can be faxed to 610-617-9397.

Pearson VUE is equipped with TDD (Telecommunications Devices for the Deaf) to assist deaf and hearing-impaired candidates. TDD calling is available during standard business hours through a special Pearson VUE toll-free number, 1-800-274-2617. This phone number is for express use by candidates with compatible TDD equipment.

Pearson VUE will determine the time and place of specially arranged examinations and confirm these arrangements with the candidate directly. In some cases, there may be an additional fee for special arrangements.

In the event that an examination is offered only on Saturdays, candidates who cannot take the examination for religious reasons may request a non-Saturday test administration. Such a request must be put in writing on official stationery by your religious advisor and sent via fax machine, or mailed to Pearson VUE. Non-Saturday testing for this circumstance is done only on a prearranged basis.

# National Certification Examinations—Computer-based

**FOR EXAMS THROUGH PAPER-AND-PENCIL TESTING:**  
**Please see the National Certification—P&P bulletin for information**  
**on exams to be taken via paper-and-pencil testing.**

Exams based on the 2009 International Codes and/or 2008 National Electrical Code will appear with this color heading.

Exams based on the 2012 International Codes and/or 2011 National Electrical Code will appear with this color heading.

## Residential Inspector Examinations

**B1 Residential Building Inspector** 60 multiple-choice questions  
 Exam fee: \$168  
 Open book—2-hour time limit

Content Area	% of Total	Reference
Code Administration	4%	2009 <i>International Residential Code</i> ®
Building Planning	8%	Store ID (2009—soft-cover): 3100S09; (M) \$86 (N) \$114
Footings and Foundations	16%	Store ID (2009—loose-leaf): 3100L09; (M) \$101; (N) \$134
Floor Construction	14%	
Wall Construction and Coverings	27%	
Roof/Ceiling Construction	14%	
Public Safety and Special Construction	17%	
<b>Total</b>	<b>100%</b>	

**B1 Residential Building Inspector** 60 multiple-choice questions  
 Exam fee: \$168  
 Open book—2-hour time limit

Content Area	% of Total	Reference
Code Administration	4%	2012 <i>International Residential Code</i> ®
Building Planning	8%	Store ID (2012—soft-cover): 3100S12; (M) \$91.50; (N) \$122
Footings and Foundations	16%	Store ID (2012—loose-leaf): 3100L12; (M) \$107; (N) \$143
Floor Construction	14%	
Wall Construction and Coverings	27%	
Roof/Ceiling Construction	14%	
Public Safety and Special Construction	17%	
<b>Total</b>	<b>100%</b>	



## Residential Inspector Examinations (continued)

Exams based on the 2009 International Codes and/or 2008 National Electrical Code will appear with this color heading.

Exams based on the 2012 International Codes and/or 2011 National Electrical Code will appear with this color heading.

### E1 Residential Electrical Inspector

60 multiple-choice questions  
Exam fee: \$168  
Open book—2-hour time limit

Content Area	% of Total	References
General Requirements	10%	1. 2009 <i>International Residential Code</i> <sup>®</sup>
Services	17%	Store ID (2009—soft-cover): 3100S09; (M) \$86; (N) \$114
Branch Circuit and Feeder Requirements	28%	Store ID (2009—loose-leaf): 3100L09; (M) \$101; (N) \$134
Wiring Methods and Power and Lighting Distribution	21%	2. 2008 <i>National Electrical Code</i> (optional secondary reference)
Devices, Lighting Fixtures, and Appliances	19%	Store ID: (soft-cover) 5000S08; (M) \$73.00; (N) \$65
Swimming Pools and Similar Installations	5%	Store ID: (loose-leaf) 5000L08; (M) \$69.95; (N) \$84.95
<b>Total</b>	<b>100%</b>	

### E1 Residential Electrical Inspector

60 multiple-choice questions  
Exam fee: \$168  
Open book—2-hour time limit

Content Area	% of Total	References
General Requirements	10%	1. 2012 <i>International Residential Code</i> <sup>®</sup>
Services	17%	Store ID: (soft-cover) 3100S12; (M) \$91.50; (N) \$122
Branch Circuit and Feeder Requirements	28%	Store ID: (loose-leaf) 3100L12; (M) \$107; (N) \$143
Wiring Methods and Power and Lighting Distribution	21%	2. 2011 <i>National Electrical Code</i> (optional secondary reference)
Devices, Lighting Fixtures, and Appliances	19%	Store ID: (soft-cover) 5000S11; (M) \$69; (N) \$77
Swimming Pools and Similar Installations	5%	Store ID: (loose-leaf) 5000L11; (M) \$85.95; (N) \$94.95
<b>Total</b>	<b>100%</b>	

Sample questions are available for most examinations on our website: To get an idea of the style and format (not content) of questions on the examinations, to go [www.iccsafe.org/exams](http://www.iccsafe.org/exams), choose the category and then examination you wish to retrieve information on, then click on "Sample."

Please visit [www.iccsafe.org/exams](http://www.iccsafe.org/exams) for expanded content outlines and the most up-to-date information. Outlines are subject to change.

Most examination references listed in this bulletin are available from the ICC Store, unless noted otherwise. More information on references, including product IDs and pricing, can be found following the exam listings. Pricing listed is for ICC Members (M) and non-members (N), and is subject to change without notice. Call 1-800-786-4452 or go to [www.iccsafe.org/store](http://www.iccsafe.org/store) to order references.

## Residential Inspector Examinations (continued)

Exams based on the 2009 International Codes and/or 2008 National Electrical Code will appear with this color heading.

Exams based on the 2012 International Codes and/or 2011 National Electrical Code will appear with this color heading.

### M1 Residential Mechanical Inspector

60 multiple-choice questions  
Exam fee: \$168  
Open book—2-hour time limit

Content Area	% of Total	Reference
General Administration	10%	1. 2009 <i>International Residential Code</i> ®
Heating and Cooling Equipment and Water Heaters	21%	Store ID (2009—soft-cover): 3100S09; (M) \$86; (N) \$114
Exhaust Systems	9%	Store ID (2009—loose-leaf): 3100L09; (M) \$101; (N) \$134
Duct Systems	8%	
Combustion Air	19%	
Chimneys and Vents	18%	
Fuel Supply Systems	15%	
<b>Total</b>	<b>100%</b>	

### M1 Residential Mechanical Inspector

60 multiple-choice questions  
Exam fee: \$168  
Open book—2-hour time limit

Content Area	% of Total	Reference
General Administration	10%	1. 2012 <i>International Residential Code</i> ®
Heating and Cooling Equipment and Water Heaters	21%	Store ID: (soft-cover) 3100S12; (M) \$91.50; (N) \$122
Exhaust Systems	9%	Store ID: (loose-leaf) 3100L12; (M) \$107; (N) \$143
Duct Systems	8%	
Combustion Air	19%	
Chimneys and Vents	18%	
Fuel Supply Systems	15%	
<b>Total</b>	<b>100%</b>	

### P1 Residential Plumbing Inspector

60 multiple-choice questions  
Exam fee: \$168  
Open book—2-hour time limit

Content Area	% of Total	Reference
General Requirements	14%	1. 2009 <i>International Residential Code</i> ®
Fixtures	8%	Store ID (2009—soft-cover): 3100S09; (M) \$86; (N) \$114
Water Heaters	12%	Store ID (2009—loose-leaf): 3100L09; (M) \$101; (N) \$134
Water Supply and Distribution	21%	
Sanitary Drainage	23%	
Vents	22%	
<b>Total</b>	<b>100%</b>	

## Residential Inspector Examinations (continued)

**P1 Residential Plumbing Inspector** 60 multiple-choice questions  
Exam fee: \$168  
Open book—2-hour time limit

Content Area	% of Total	Reference
General Requirements	14%	1. 2012 <i>International Residential Code</i> <sup>®</sup>
Fixtures	8%	Store ID: (soft-cover) 3100S12; (M) \$91.50; (N) \$122
Water Heaters	12%	Store ID: (loose-leaf) 3100L12; (M) \$107; (N) \$143
Water Supply and Distribution	21%	
Sanitary Drainage	23%	
Vents	22%	
<b>Total</b>	<b>100%</b>	

## Commercial Inspector Examinations

**B2 Commercial Building Inspector** 80 multiple-choice questions  
Exam fee: \$189  
Open book—3-1/2-hour time limit

Content Area	% of Total	References
General Administration	6%	1. 2009 <i>International Building Code</i> <sup>®</sup>
Building Planning	20%	Store ID: (soft-cover) 3000S09; (M) \$94; (N) \$125
Footings and Foundations	8%	Store ID: (loose-leaf) 3000L09; (M) \$105; (N) \$141
Floor Construction	8%	2. <i>Building Code Requirements for Structural Concrete and Commentary</i> (2008 or 2011 edition) or
Wall Construction and Coverings	21%	
Roof/Ceiling Construction	6%	Store ID: (soft-cover) 9021S08; (M) \$139.50; (N) \$174.50
Public Safety and Special Construction	31%	ICC <i>Concrete Manual</i> <sup>®</sup> (2006, 2009, or 2012 edition)
<b>Total</b>	<b>100%</b>	Store ID: (2012) 9090S12; (M) \$69.50; (N) \$86.95

**B2 Commercial Building Inspector** 80 multiple-choice questions  
Exam fee: \$189  
Open book—3-1/2-hour time limit

Content Area	% of Total	References
General Administration	6%	1. 2012 <i>International Building Code</i> <sup>®</sup>
Building Planning	20%	Store ID: (soft-cover) 3000S12; (M) \$98; (N) \$131
Footings and Foundations	8%	Store ID: (loose-leaf) 3000L12; (M) \$111; (N) \$148
Floor Construction	8%	2. <i>Building Code Requirements for Structural Concrete and Commentary</i> (2008 or 2011 edition) OR
Wall Construction and Coverings	21%	
Roof/Ceiling Construction	6%	Store ID: (soft-cover) 9021S11; (M) \$154; (N) \$192.50
Public Safety and Special Construction	31%	ICC <i>Concrete Manual</i> <sup>®</sup> (2006, 2009, or 2012 edition)
<b>Total</b>	<b>100%</b>	Store ID: (2012) 9090S12; (M) \$69.50; (N) \$86.95

Please visit [www.iccsafe.org/exams](http://www.iccsafe.org/exams) for expanded content outlines and the most up-to-date information. Outlines are subject to change.

## Commercial Inspector Examinations (continued)

Exams based on the 2009 International Codes and/or 2008 National Electrical Code will appear with this color heading.

Exams based on the 2012 International Codes and/or 2011 National Electrical Code will appear with this color heading.

**E2 Commercial Electrical Inspector** 80 multiple-choice questions  
Exam fee: \$189  
Open book—3-1/2-hour time limit

Content Area	% of Total	Reference
General Requirements	10%	1. 2008 <i>National Electrical Code</i>
Services	17%	Store ID: (soft-cover) 5000S08; (M) \$73.00; (N) \$65
Branch Circuit and Feeder Requirements	19%	Store ID: (loose-leaf) 5000L08; (M) \$69.95; (N) \$84.95
Wiring Methods and Distribution Systems	19%	
General Use Equipment	12%	
Special Occupancies	9%	
Special Equipment	7%	
Special Systems	7%	
<b>Total</b>	<b>100%</b>	

**E2 Commercial Electrical Inspector** 80 multiple-choice questions  
Exam fee: \$189  
Open book—3-1/2-hour time limit

Content Area	% of Total	Reference
General Requirements	10%	1. 2011 <i>National Electrical Code</i>
Services	17%	Store ID: (soft-cover) 5000S11; (M) \$69; (N) \$77
Branch Circuit and Feeder Requirements	19%	Store ID: (loose-leaf) 5000L11; (M) \$85.95; (N) \$94.95
Wiring Methods and Distribution Systems	19%	
General Use Equipment	12%	
Special Occupancies	9%	
Special Equipment	7%	
Special Systems	7%	
<b>Total</b>	<b>100%</b>	

**M2 Commercial Mechanical Inspector** 50 multiple-choice questions  
Exam fee: \$189  
Open book—2-hour time limit

Content Area	% of Total	References
General Administration	15%	1. 2009 <i>International Mechanical Code</i> <sup>®</sup>
Heating and Cooling and Water Heaters	15%	Store ID: (soft-cover) 3300S09; (M) \$57; (N) \$76
Exhaust and Ventilation Systems	20%	Store ID: (loose-leaf) 3300L09; (M) \$66.50; (N) \$88.50
Duct Systems	12%	2. 2009 <i>International Fuel Gas Code</i> <sup>®</sup>
Combustion Air	14%	Store ID: (soft-cover) 3600S09; (M) \$57; (N) \$76
Chimneys and Vents	14%	Store ID: (loose-leaf) 3600L09; (M) \$66.50; (N) \$88.50
Fuel Supply Systems	10%	
<b>Total</b>	<b>100%</b>	

## Commercial Inspector Examinations (continued)

Exams based on the 2009 International Codes and/or 2008 National Electrical Code will appear with this color heading.

Exams based on the 2012 International Codes and/or 2011 National Electrical Code will appear with this color heading.

### M2 Commercial Mechanical Inspector

50 multiple-choice questions  
Exam fee: \$189  
Open book—2-hour time limit

Content Area	% of Total	References
General Administration	15%	1. 2012 <i>International Mechanical Code</i> <sup>®</sup>
Heating and Cooling and Water Heaters	15%	Store ID: (soft-cover) 3300S12; (M) \$60; (N) \$80
Exhaust and Ventilation Systems	20%	Store ID: (loose-leaf) 3300L12; (M) \$69.75; (N) \$93
Duct Systems	12%	2. 2012 <i>International Fuel Gas Code</i> <sup>®</sup>
Combustion Air	14%	Store ID: (soft-cover) 3600S12; (M) \$60; (N) \$80
Chimneys and Vents	14%	Store ID: (loose-leaf) 3600L12; (M) \$69.75; (N) \$93
Fuel Supply Systems	10%	
<b>Total</b>	<b>100%</b>	

### P2 Commercial Plumbing Inspector

50 multiple-choice questions  
Exam fee: \$189  
Open book—2-hour time limit

Content Area	% of Total	References
General Requirements	10%	1. 2009 <i>International Plumbing Code</i> <sup>®</sup>
Fixtures	12%	Store ID: (soft-cover) 3200S09; (M) \$60; (N) \$80
Water Heaters	14%	Store ID: (loose-leaf) 3200L09; (M) \$69.50; (N) \$92.95
Water Supply and Distribution	14%	2. 2009 <i>International Fuel Gas Code</i> <sup>®</sup>
Sanitary Drainage	16%	Store ID: (soft-cover) 3600S09; (M) \$57; (N) \$76
Vents	12%	Store ID: (loose-leaf) 3600L09; (M) \$66.50; (N) \$88.50
Traps, Interceptors, Separators, Special Piping, and Storage Systems	10%	3. ICC/ANSI A117.1-2003 <i>Standard on Accessible and Usable Buildings and Facilities</i> <sup>®</sup>
Storm Drainage	6%	
Health Care Plumbing	6%	Store ID: (soft-cover) 9033S03; (M) \$36.95; (N) \$46
<b>Total</b>	<b>100%</b>	

### P2 Commercial Plumbing Inspector

50 multiple-choice questions  
Exam fee: \$189  
Open book—2-hour time limit

Content Area	% of Total	References
General Requirements	10%	1. 2012 <i>International Plumbing Code</i> <sup>®</sup>
Fixtures	12%	Store ID: (soft-cover) 3200S12; (M) \$63; (N) \$84
Water Heaters	14%	Store ID: (loose-leaf) 3200L12; (M) \$73.50; (N) \$98
Water Supply and Distribution	14%	2. 2012 <i>International Fuel Gas Code</i> <sup>®</sup>
Sanitary Drainage	16%	Store ID: (soft-cover) 3600S12; (M) \$60; (N) \$80
Vents	12%	Store ID: (loose-leaf) 3600L12; (M) \$69.75; (N) \$93
Traps, Interceptors, Separators, Special Piping, and Storage Systems	10%	3. ICC/ANSI A117.1-2009 <i>Standard on Accessible and Usable Buildings and Facilities</i> <sup>®</sup>
Storm Drainage	6%	
Health Care Plumbing	6%	Store ID: (soft-cover) 9033S09; (M) \$36.95; (N) \$46
<b>Total</b>	<b>100%</b>	

## General Plans Examiner Examinations

Exams based on the 2009 International Codes and/or 2008 National Electrical Code will appear with this color heading.

Exams based on the 2012 International Codes and/or 2011 National Electrical Code will appear with this color heading.

### B3 Building Plans Examiner

80 multiple-choice questions  
Exam fee: \$189  
Open book—3-1/2-hour time limit

Content Area	% of Total	References
General Administration	5%	1. 2009 <i>International Building Code</i> ®
Building Planning	21%	Store ID: (soft-cover) 3000S09; (M) \$94; (N) \$125 <u>or</u>
Footings and Foundations	8%	Store ID: (loose-leaf) 3000L09; (M) \$105; (N) \$141
Floor Construction	4%	2. <i>Building Code Requirements for Structural Concrete</i>
Wall Construction and Coverings	12%	<i>and Commentary</i> (2008 or 2011 edition) <b>OR</b>
Roof/Ceiling Construction	4%	Store ID: (soft-cover) 9021S08; (M) \$139.50; (N) \$174.50
Public Safety and Special Construction	46%	ICC <i>Concrete Manual</i> ® (2006, 2009, or 2012 edition)
<b>Total</b>	<b>100%</b>	Store ID: (2012) 9090S12; (M) \$69.50; (N) \$86.95

### B3 Building Plans Examiner

80 multiple-choice questions  
Exam fee: \$189  
Open book—3-1/2-hour time limit

Content Area	% of Total	References
General Administration	5%	1. 2012 <i>International Building Code</i> ®
Building Planning	21%	Store ID: (soft-cover) 3000S12; (M) \$98; (N) \$131
Footings and Foundations	8%	Store ID: (loose-leaf) 3000L12; (M) \$111; (N) \$148
Floor Construction	4%	2. <i>Building Code Requirements for Structural Concrete</i>
Wall Construction and Coverings	12%	<i>and Commentary</i> (2008 or 2011 edition) <b>OR</b>
Roof/Ceiling Construction	4%	Store ID: (soft-cover) 9021S11; (M) \$154; (N) \$192.50
Public Safety and Special Construction	46%	ICC <i>Concrete Manual</i> ® (2006, 2009, or 2012 edition)
<b>Total</b>	<b>100%</b>	Store ID: (2012) 9090S12; (M) \$69.50; (N) \$86.95

### E3 Electrical Plans Examiner

70 multiple-choice questions  
Exam fee: \$189  
Open book—3-1/2-hour time limit

Content Area	% of Total	References
General Administration	2%	1. 2008 <i>National Electrical Code</i>
Services	24%	Store ID: (soft-cover) 5000S08; (M) \$65; (N) \$73
Branch Circuit and Feeder Requirements	19%	Store ID: (loose-leaf) 5000L08; (M) \$69.95; (N) \$84.95
Wiring Methods and Distribution Systems	11%	2. 2011 <i>Ugly's Electrical References</i>
Equipment for General Use	15%	Note: The above reference is available at <a href="http://www.uglys.net">www.uglys.net</a> .
Special Occupancies	16%	
Special Equipment	7%	
Special Systems	6%	
<b>Total</b>	<b>100%</b>	

Please visit [www.iccsafe.org/exams](http://www.iccsafe.org/exams) for expanded content outlines and the most up-to-date information. Outlines are subject to change.

## General Plans Examiner Examinations (continued)

E3 Electrical Plans Examiner		70 multiple-choice questions Exam fee: \$189 Open book—3-1/2-hour time limit
Content Area	% of Total	References
General Administration	2%	1. 2011 <i>National Electrical Code</i>
Services	24%	Store ID: (soft-cover) 5000S11; (M) \$69; (N) \$77
Branch Circuit and Feeder Requirements	19%	Store ID: (loose-leaf) 5000L11; (M) \$85.95; (N) \$94.95
Wiring Methods and Distribution Systems	11%	2. 2011 <i>Ugly's Electrical References</i>
Equipment for General Use	15%	Note: The above reference is available at <a href="http://www.uglys.net">www.uglys.net</a> .
Special Occupancies	16%	
Special Equipment	7%	
Special Systems	6%	
<b>Total</b>	<b>100%</b>	

M3 Mechanical Plans Examiner		50 multiple-choice questions Exam fee: \$189 Open book—2-hour time limit
Content Area	% of Total	References
General Administration	5%	1. 2009 <i>International Mechanical Code</i> <sup>®</sup>
Appliances and Equipment	15%	Store ID: (soft-cover) 3300S09; (M) \$57; (N) \$76
Exhaust and Ventilation Systems	25%	Store ID: (loose-leaf) 3300L09; (M) \$66.50; (N) \$88.50
Duct Systems	8%	2. 2009 <i>International Fuel Gas Code</i> <sup>®</sup>
Combustion Air	21%	Store ID: (soft-cover) 3600S09; (M) \$57; (N) \$76
Chimneys and Vents	17%	Store ID: (loose-leaf) 3600L09; (M) \$66.50; (N) \$88.50
Fuel Supply Systems	9%	
<b>Total</b>	<b>100%</b>	

M3 Mechanical Plans Examiner		50 multiple-choice questions Exam fee: \$189 Open book—2-hour time limit
Content Area	% of Total	References
General Administration	5%	1. 2012 <i>International Mechanical Code</i> <sup>®</sup>
Appliances and Equipment	15%	Store ID: (soft-cover) 3300S12; (M) \$60; (N) \$80
Exhaust and Ventilation Systems	25%	Store ID: (loose-leaf) 3300L12; (M) \$69.75; (N) \$93
Duct Systems	8%	2. 2012 <i>International Fuel Gas Code</i> <sup>®</sup>
Combustion Air	21%	Store ID: (soft-cover) 3600S12; (M) \$60; (N) \$80
Chimneys and Vents	17%	Store ID: (loose-leaf) 3600L12; (M) \$69.75; (N) \$93
Fuel Supply Systems	9%	
<b>Total</b>	<b>100%</b>	

Most examination references listed in this bulletin are available from the ICC Store, unless noted otherwise. More information on references, including product IDs and pricing, can be found following the exam listings. Pricing listed is for ICC Members (M) and non-members (N), and is subject to change without notice. Call 1-800-786-4452 or go to [www.iccsafe.org/store](http://www.iccsafe.org/store) to order references.

## General Plans Examiner Examinations (continued)

Please visit [www.iccsafe.org/exams](http://www.iccsafe.org/exams) for expanded content outlines and the most up-to-date information. Outlines are subject to change.

**P3 Plumbing Plans Examiner** 50 multiple-choice questions  
Exam fee: \$189  
Open book—2-hour time limit

Content Area	% of Total	References
General Requirements	6%	1. 2009 <i>International Plumbing Code</i> ®
Fixtures	12%	Store ID: (soft-cover) 3200S09; (M) \$60; (N) \$80
Water Heaters	14%	Store ID: (loose-leaf) 3200L09; (M) \$69.50; (N) \$92.95
Water Supply and Distribution	16%	2. 2009 <i>International Fuel Gas Code</i> ®
Sanitary Drainage	14%	Store ID: (soft-cover) 3600S09; (M) \$57; (N) \$76
Vents	14%	Store ID: (loose-leaf) 3600L09; (M) \$66.50; (N) \$88.50
Traps, Interceptors, Separators, Special Piping, and Storage Systems	10%	3. ICC/ANSI A117.1-2003 <i>Standard on Accessible and Usable Buildings and Facilities</i> ®
Storm Drainage	8%	
Health Care Plumbing	6%	Store ID: (soft-cover) 9033S03; (M) \$36.95; (N) \$46
<b>Total</b>	<b>100%</b>	

**P3 Plumbing Plans Examiner** 50 multiple-choice questions  
Exam fee: \$189  
Open book—2-hour time limit

Content Area	% of Total	References
General Requirements	6%	1. 2012 <i>International Plumbing Code</i> ®
Fixtures	12%	Store ID: (soft-cover) 3200S12; (M) \$63; (N) \$84
Water Heaters	14%	Store ID: (loose-leaf) 3200L12; (M) \$73.50; (N) \$98
Water Supply and Distribution	16%	2. 2012 <i>International Fuel Gas Code</i> ®
Sanitary Drainage	14%	Store ID: (soft-cover) 3600S12; (M) \$60; (N) \$80
Vents	14%	Store ID: (loose-leaf) 3600L12; (M) \$69.75; (N) \$93
Traps, Interceptors, Separators, Special Piping, and Storage Systems	10%	3. ICC/ANSI A117.1-2009 <i>Standard on Accessible and Usable Buildings and Facilities</i> ®
Storm Drainage	8%	
Health Care Plumbing	6%	Store ID: (soft-cover) 9033S09; (M) \$36.95; (N) \$46
<b>Total</b>	<b>100%</b>	

**R3 Residential Plans Examiner** 60 multiple-choice questions  
Exam fee: \$189  
Open book—2-hour time limit

Content Area	% of Total	Reference
Administrative	5%	1. 2009 <i>International Residential Code</i> ®
Site	10%	Store ID (2009—soft-cover): 3100S09; (M) \$86; (N) \$114
Architectural and Life Safety	25%	Store ID (2009—loose-leaf): 3100L09; (M) \$101; (N) \$134
Structural	25%	
Energy Efficiency	5%	
Mechanical	10%	
Plumbing	10%	
Electrical	10%	
<b>Total</b>	<b>100%</b>	



## General Plans Examiner Examinations (continued)

<b>R3 Residential Plans Examiner</b>	60 multiple-choice questions Exam fee: \$189 Open book—2-hour time limit
--------------------------------------	--

Content Area	% of Total	Reference
Administrative	5%	1. 2012 <i>International Residential Code</i> ®
Site	10%	Store ID: (soft-cover) 3100S12; (M) \$91.50; (N) \$122
Architectural and Life Safety	25%	Store ID: (loose-leaf) 3100L12; (M) \$107; (N) \$143
Structural	25%	
Energy Efficiency	5%	
Mechanical	10%	
Plumbing	10%	
Electrical	10%	
<b>Total</b>	<b>100%</b>	

<b>RF Residential Fire Sprinkler Inspector/Plans Examiner</b>	60 multiple-choice questions Exam fee: \$189 Open book—2-hour time limit
---	--

Content Area	% of Total	References
Sprinkler Components	5%	1. 2009 <i>International Residential Code</i> ®
Piping Components	5%	Store ID (2009—soft-cover): 3100S09; (M) \$86; (N) \$114
Water Supply	10%	Store ID (2009—loose-leaf): 3100L09; (M) \$101; (N) \$134
System Design	37%	2. 2007 NFPA 13D, <i>Standard for the Installation of Sprinkler</i>
Installation	43%	<i>Systems in One- and Two-Family Dwellings and</i>
<b>Total</b>	<b>100%</b>	<i>Manufactured Homes</i> Store ID: (soft-cover) 9430S07; (M) \$37; (N) \$41

<b>RF Residential Fire Sprinkler Inspector/Plans Examiner</b>	60 multiple-choice questions Exam fee: \$189 Open book—2-hour time limit
---	--

Content Area	% of Total	References
Sprinkler Components	5%	1. 2012 <i>International Residential Code</i> ®
Piping Components	5%	Store ID: (soft-cover) 3100S12; (M) \$91.50; (N) \$122
Water Supply	10%	Store ID: (loose-leaf) 3100L12; (M) \$107; (N) \$143
System Design	37%	2. 2010 NFPA 13D, <i>Standard for the Installation of Sprinkler</i>
Installation	43%	<i>Systems in One- and Two-Family Dwellings and</i>
<b>Total</b>	<b>100%</b>	<i>Manufactured Homes</i> Store ID: (soft-cover) 9430S10; (M) \$41; (N) \$45

Please visit [www.iccsafe.org/exams](http://www.iccsafe.org/exams) for expanded content outlines and the most up-to-date information. Outlines are subject to change.

Most examination references listed in this bulletin are available from the ICC Store, unless noted otherwise. More information on references, including product IDs and pricing, can be found following the exam listings. Pricing listed is for ICC Members (M) and non-members (N), and is subject to change without notice. Call 1-800-786-4452 or go to [www.iccsafe.org/store](http://www.iccsafe.org/store) to order references.

## Code Enforcement Examinations

Exams based on the 2009 International Codes and/or 2008 National Electrical Code will appear with this color heading.

Exams based on the 2012 International Codes and/or 2011 National Electrical Code will appear with this color heading.

**14 Permit Technician** 60 multiple-choice questions  
Exam fee: \$189  
Open book—2-hour time limit

Content Area	% of Total	References
General Administration	39%	1. 2009 <i>International Building Code</i> ®, chapters 1-3,
Legal Aspects	22%	6, 12, and 34
Plans and Documents	25%	Store ID: (soft-cover) 3000S09; (M) \$94; (N) \$125
Zoning and Site Development	14%	Store ID: (loose-leaf) 3000L09; (M) \$105; (N) \$141
<b>Total</b>	<b>100%</b>	2. 2009 <i>International Zoning Code</i> ® Store ID: (soft-cover) 3900S09; (M) \$25.50; (N) \$34
		3. 2002 <i>Legal Aspects of Code Administration</i> Store ID: (soft-cover) 1007S01; (M) \$30; (N) \$38
		4. <i>Basic Code Enforcement</i> , Copyright 2008 or newer Store ID: (soft-cover) 1016S12; (M) \$30; (N) \$40, work-book edition

**14 Permit Technician** 60 multiple-choice questions  
Exam fee: \$189  
Open book—2-hour time limit

Content Area	% of Total	References
General Administration	39%	1. 2012 <i>International Building Code</i> ®, chapters 1-3, 6, 12, & 34
Legal Aspects	22%	Store ID: (soft-cover) 3000S12; (M) \$98; (N) \$131
Plans and Documents	25%	Store ID: (loose-leaf) 3000L12; (M) \$111; (N) \$148
Zoning and Site Development	14%	2. 2012 <i>International Zoning Code</i> ®
<b>Total</b>	<b>100%</b>	Store ID: (soft-cover) 3900S12; (M) \$25.50; (N) \$34
		3. 2002 <i>Legal Aspects of Code Administration</i> Store ID: (soft-cover) 1007S01; (M) \$30; (N) \$38
		4. <i>Basic Code Enforcement</i> , Copyright 2008 or newer Store ID: (soft-cover) 1016S12; (M) \$30; (N) \$40, workbook edition

**75 Zoning Inspector** 50 multiple-choice questions  
Exam fee: \$189  
Open book—2-hour time limit

Content Area	% of Total	References
Legal Aspects of Zoning Inspection	28%	1. 2009 <i>International Zoning Code</i> ®
Administrative Aspects of Zoning Inspection	14%	Store ID: (soft-cover) 3900S09; (M) \$25.50; (N) \$34
Plan Zoning	16%	2. 2002 <i>Legal Aspects of Code Administration</i>
Development Regulations	22%	Store ID: (soft-cover) 1007S01; (M) \$30; (N) \$38
Sign Regulations	20%	
<b>Total</b>	<b>100%</b>	

## Code Enforcement Examinations (continued)

**75 Zoning Inspector** 50 multiple-choice questions  
Exam fee: \$189  
Open book—2-hour time limit

Content Area	% of Total	References
Legal Aspects of Zoning Inspection	28%	1. 2012 <i>International Zoning Code</i> ®
Administrative Aspects of Zoning Inspection	14%	Store ID: (soft-cover) 3900S12; (M) \$25.50; (N) \$34
Plan Zoning	16%	2. 2002 <i>Legal Aspects of Code Administration</i>
Development Regulations	22%	Store ID: (soft-cover) 1007S01; (M) \$30; (N) \$38
Sign Regulations	20%	
<b>Total</b>	<b>100%</b>	

**64 Property Maintenance and Housing Inspector** 50 multiple-choice questions  
Exam fee: \$189  
Open book—2-hour time limit

Content Area	% of Total	References
Administration and Legal	22%	1. 2009 <i>International Residential Code</i> ®
Light, Ventilation, and Occupancy	14%	Store ID (2009—soft-cover): 3100S09; (M) \$86; (N) \$114
Fire and Life Safety	14%	Store ID (2009—loose-leaf): 3100L09; (M) \$101; (N) \$134
Mechanical	6%	2. 2009 <i>International Property Maintenance Code</i> ®
Plumbing	10%	Store ID: (soft-cover) 3500S09; (M) \$27; (N) \$36
Electrical	8%	3. 2002 <i>Legal Aspects of Code Administration</i>
Property Conditions	26%	Store ID: (soft-cover) 1007S01; (M) \$30; (N) \$38
<b>Total</b>	<b>100%</b>	

**64 Property Maintenance and Housing Inspector** 50 multiple-choice questions  
Exam fee: \$189  
Open book—2-hour time limit

Content Area	% of Total	References
Administration and Legal	22%	1. 2012 <i>International Residential Code</i> ®
Light, Ventilation, and Occupancy	14%	Store ID: (soft-cover) 3100S12; (M) \$91.50; (N) \$122
Fire and Life Safety	14%	Store ID: (loose-leaf) 3100L12; (M) \$107; (N) \$143
Mechanical	6%	2. 2012 <i>International Property Maintenance Code</i> ®
Plumbing	10%	Store ID: (soft-cover) 3500S12; (M) \$29.25; (N) \$39
Electrical	8%	3. 2002 <i>Legal Aspects of Code Administration</i>
Property Conditions	26%	Store ID: (soft-cover) 1007S01; (M) \$30; (N) \$38
<b>Total</b>	<b>100%</b>	

Please visit [www.iccsafe.org/exams](http://www.iccsafe.org/exams) for expanded content outlines and the most up-to-date information. Outlines are subject to change.

Most examination references listed in this bulletin are available from the ICC Store, unless noted otherwise. More information on references, including product IDs and pricing, can be found following the exam listings. Pricing listed is for ICC Members (M) and non-members (N), and is subject to change without notice. Call 1-800-786-4452 or go to [www.iccsafe.org/store](http://www.iccsafe.org/store) to order references.

## Code Enforcement Examinations (continued)

Exams based on the 2009 International Codes and/or 2008 National Electrical Code will appear with this color heading.

Exams based on the 2012 International Codes and/or 2011 National Electrical Code will appear with this color heading.

C1 Coastal and Floodplain Construction Inspector  
Prerequisite Certifications: B1 and B2 (must be current)

60 multiple-choice questions  
Exam fee: \$189  
Open book—2-hour time limit

Content Area	% of Total	References
General Construction Provisions	10%	1. 2009 <i>International Building Code</i> <sup>®</sup>
Special High Wind Provisions and Load Path Continuity	35%	Store ID: (soft-cover) 3000S09; (M) \$94; (N) \$125
Special Flood Hazard Areas	35%	Store ID: (loose-leaf) 3000L09; (M) \$105; (N) \$141
Detached and Attached Accessory Structures	10%	2. 2009 <i>International Residential Code</i> <sup>®</sup>
Governmental Regulations	10%	Store ID (2009—soft-cover): 3100S09; (M) \$86; (N) \$114
<b>Total</b>	<b>100%</b>	Store ID (2009—loose-leaf): 3100L09; (M) \$101; (N) \$134
		3. SSTD 10-99 <i>Standard for Hurricane Resistant Residential Construction</i>
		Store ID: (download) 8744P99; (M) \$27; (N) \$34
		4. 2001 <i>Wood Frame Construction Manual for One- and Two-Family Dwellings and Commentary to the WFCM</i>
		Store ID: (soft-cover) 9104s01; (M) \$54; (N) \$60
		5. FEMA 499 <i>Home Builder's Guide to Coastal Construction Fact Sheets</i>
		Store ID: (soft-cover) 1376S; (M) \$12; (N) \$15
		6. 2005 FEMA 55 <i>Coastal Construction Manual</i>
		7. ASCE/SEI 24-05 <i>Flood Resistant Design and Construction</i>
		Store ID: (soft-cover) 9020S05; (M) \$53; (N) \$59

Sample questions are available for most examinations on our website: To get an idea of the style and format (not content) of questions on the examinations, to go [www.iccsafe.org/exams](http://www.iccsafe.org/exams), choose the category and then examination you wish to retrieve information on, then click on "Sample."

Please visit [www.iccsafe.org/exams](http://www.iccsafe.org/exams) for expanded content outlines and the most up-to-date information. Outlines are subject to change.

Most examination references listed in this bulletin are available from the ICC Store, unless noted otherwise. More information on references, including product IDs and pricing, can be found following the exam listings. Pricing listed is for ICC Members (M) and non-members (N), and is subject to change without notice. Call 1-800-786-4452 or go to [www.iccsafe.org/store](http://www.iccsafe.org/store) to order references.

## Code Enforcement Examinations (continued)

C1 Coastal and Floodplain Construction Inspector  
Prerequisite Certifications: B1 and B2 (must be current)

60 multiple-choice questions  
Exam fee: \$189  
Open book—2-hour time limit

Content Area	% of Total	References
General Construction Provisions	10%	1. 2012 <i>International Building Code</i> ® Store ID: (soft-cover) 3000S12; (M) \$98; (N) \$131
Special High Wind Provisions and Load Path Continuity	35%	Store ID: (loose-leaf) 3000L12; (M) \$111; (N) \$148
Special Flood Hazard Areas	35%	2. 2012 <i>International Residential Code</i> ®
Detached and Attached Accessory Structures	10%	Store ID: (soft-cover) 3100S12; (M) \$91.50; (N) \$122
Governmental Regulations	10%	Store ID: (loose-leaf) 3100L12; (M) \$107; (N) \$143
<b>Total</b>	<b>100%</b>	3. SSTD 10-99 <i>Standard for Hurricane Resistant Residential Construction</i> Store ID: (download) 8744P99; (M) \$27; (N) \$34
		4. 2001 <i>Wood Frame Construction Manual for One- and Two-Family Dwellings and Commentary to the WFCM</i> Store ID: (soft-cover) 9104s01; (M) \$54; (N) \$60
		5. FEMA 499 <i>Home Builder's Guide to Coastal Construction Fact Sheets</i> Store ID: (soft-cover) 1376S; (M) \$12; (N) \$15
		6. 2005 FEMA 55 <i>Coastal Construction Manual</i>
		7. ASCE/SEI 24-05 <i>Flood Resistant Design and Construction</i> Store ID: (soft-cover) 9020S05; (M) \$53; (N) \$59

21 Accessibility Inspector/Plans Examiner

80 multiple-choice questions  
Exam fee: \$189  
Open book—2-1/2-hour time limit

Content Area	% of Total	References
General Administrative and Scoping Provisions	8%	1. 2009 <i>International Building Code</i> ®, including Appendix E Store ID: (soft-cover) 3000S09; (M) \$94; (N) \$125
Building Blocks	13%	Store ID: (loose-leaf) 3000L09; (M) \$105; (N) \$141
Accessible Routes	27%	2. ICC/ANSI A117.1-2003 <i>Standard on Accessible and Usable Buildings and Facilities</i> ®
General Site and Building Elements	9%	Store ID: (soft-cover) 9033S03; (M) \$36.95; (N) \$46
Plumbing Elements and Facilities	15%	
Communications Elements and Features	6%	
Special Occupancies, Rooms, and Spaces	7%	
Built-in Furnishings and Equipment	6%	
Dwelling and Sleeping Units	9%	
<b>Total</b>	<b>100%</b>	

## Code Enforcement Examinations (continued)

### 21 Accessibility Inspector/Plans Examiner

80 multiple-choice questions  
Exam fee: \$189  
Open book 2-1/2-hour time limit

Content Area	% of Total	References
General Administrative and Scoping Provisions	8%	1. 2012 <i>International Building Code</i> ®, including Appendix E Store ID: (soft-cover) 3000S12; (M) \$98; (N) \$131 <b>or</b> Store ID: (loose-leaf) 3000L12; (M) \$111; (N) \$148 2. ICC/ANSI A117.1-2009 <i>Standard on Accessible and Usable Buildings and Facilities</i> ® Store ID: (soft-cover) 9033S09; (M) \$36.95; (N) \$46
Building Blocks	11%	
Accessible Routes	28%	
General Site and Building Elements	9%	
Plumbing Elements and Facilities	10%	
Communications Elements and Features	6%	
Special Occupancies, Rooms, and Spaces	7%	
Built-in Furnishings and Equipment	5%	
Dwelling and Sleeping Units	6%	
Recreational Facilities	10%	
<b>Total</b>	<b>100%</b>	

### DR Disaster Response Inspector Prerequisite Certifications: See note below

60 multiple-choice questions  
Exam fee: \$189  
Open book—2-hour time limit

Content Area	% of Total	References
Administration	30%	1. 2009 <i>International Building Code</i> ® Store ID: (soft-cover) 3000S09; (M) \$94; (N) \$125 Store ID: (loose-leaf) 3000L09; (M) \$105; (N) \$141 2. 2009 <i>International Residential Code</i> ® Store ID: (soft-cover) 3100S12; (M) \$91.50; (N) \$122 Store ID: (loose-leaf) 3100L12; (M) \$107; (N) \$143 3. 2009 <i>International Existing Building Code</i> ® Store ID: (soft-cover) 3550S09; (M) \$50.95; (N) \$67.95 Store ID: (loose-leaf) 3550L09; (M) \$57.95; (N) \$77 4. 2008 <i>National Electrical Code</i> Store ID: (soft-cover) 5000S08; (M) \$65; (N) \$73 Store ID: (loose-leaf) 5000L08; (M) \$69.95; (N) \$84.95 5. National Incident Management System* (This is a Federal program that candidates should be familiar with. It is not a publication.) 6. Applied Technology Council (ATC) references: — ATC-20 <i>Procedures for Postearthquake Safety Evaluation of Buildings</i> , 1989 — ATC-20-1 <i>Field Manual: Postearthquake Safety Evaluation of Buildings</i> , 2nd edition, 2005 — ATC-20-2 <i>Addendum to the ATC-20 Postearthquake Building Safety Evaluation Procedures</i> , 1995 — ATC-45 <i>Field Manual: Safety Evaluation of Buildings After Wind Storms and Floods</i> , 2004
Inspection	70%	
<b>Total</b>	<b>100%</b>	
<p><b>Please note:</b> Candidates are required to have at least one of the following <u>current</u> certifications:</p> <ul style="list-style-type: none"> <li>Residential Inspector, Commercial Inspector, or Plans Examiner certification in either building, plumbing, mechanical, or electrical;</li> <li>Fire Inspector I, Fire Plans Examiner, <b>OR</b> Certified Building Official;</li> </ul> <p><b>OR be a state-licensed architect or state-licensed engineer.</b></p> <p>* Information on the National Incident Management System (NIMS) is available at <a href="http://www.fema.gov/emergency/nims">www.fema.gov/emergency/nims</a>.</p>		

## Code Enforcement Examinations (continued)

DR Disaster Response Inspector  
 Prerequisite Certifications: See note below

60 multiple-choice questions  
 Exam fee: \$189  
 Open book—2-hour time limit

Content Area	% of Total	References
Administration	30%	1. 2012 <i>International Building Code</i> ®
Inspection	70%	Store ID: (soft-cover) 3000S12; (M) \$98; (N) \$131
<b>Total</b>	<b>100%</b>	Store ID: (loose-leaf) 3000L12; (M) \$111; (N) \$148
<p><b>Please note:</b> Candidates are required to have at least one of the following <u>current</u> certifications:</p> <ul style="list-style-type: none"> <li>Residential Inspector, Commercial Inspector, or Plans Examiner certification in either building, plumbing, mechanical, or electrical;</li> <li>Fire Inspector I, Fire Plans Examiner, <b>OR</b> Certified Building Official;</li> </ul> <p><b>OR be a state-licensed architect or state-licensed engineer.</b></p> <p>* Information on the National Incident Management System (NIMS) is available at <a href="http://www.fema.gov/emergency/nims">www.fema.gov/emergency/nims</a>.</p>		<p>2. 2012 <i>International Residential Code</i>®</p> <p>Store ID: (soft-cover) 3100S12; (M) \$91.50; (N) \$122</p> <p>Store ID: (loose-leaf) 3100L12; (M) \$107; (N) \$143</p> <p>3. 2012 <i>International Existing Building Code</i>®</p> <p>Store ID: (soft-cover) 3550S12; (M) \$53.25; (N) \$71</p> <p>Store ID: (loose-leaf) 33550L12; (M) \$60.75; (N) \$81</p> <p>4. 2011 <i>National Electrical Code</i></p> <p>Store ID: (soft-cover) 5000S11; (M) \$69; (N) \$77</p> <p>Store ID: (loose-leaf) 5000L11; (M) \$85.95; (N) \$94.95</p> <p>5. National Incident Management System 100, 200, and 700A*        (These are part of a Federal program, not a publication.)</p> <p>6. <b>Applied Technology Council (ATC) references:</b></p> <p>— ATC-20 <i>Procedures for Postearthquake Safety Evaluation of Buildings</i>, 1989</p> <p>— ATC-20-1 <i>Field Manual: Postearthquake Safety Evaluation of Buildings</i>, 2nd edition, 2005</p> <p>— ATC-20-2 <i>Addendum to the ATC-20 Postearthquake Building Safety Evaluation Procedures</i>, 1995</p> <p>— ATC-45 <i>Field Manual: Safety Evaluation of Buildings After Wind Storms and Floods</i>, 2004</p>

FG Fuel Gas Inspector

60 multiple-choice questions  
 Exam fee: \$189  
 Open book—2-hour time limit

Content Area	% of Total	Reference
General Requirements and Administration	27%	1. 2009 <i>International Fuel Gas Code</i> ®
Inspection and Testing	7%	Store ID: (soft-cover) 3600S09; (M) \$57; (N) \$76
Venting—Materials, Installation, and Sizing	17%	Store ID: (loose-leaf) 3600L09; (M) \$66.50; (N) \$88.50
Piping Systems—Materials, Installation, and Sizing	22%	
Combustion Air	20%	
Types of Gas and Specialty Gas Systems	7%	
<b>Total</b>	<b>100%</b>	

## Code Enforcement Examinations (continued)

FG Fuel Gas Inspector 60 multiple-choice questions  
Exam fee: \$189  
Open book—2-hour time limit

Content Area	% of Total	Reference
General Requirements and Administration	27%	1. 2012 <i>International Fuel Gas Code</i> <sup>®</sup>
Inspection and Testing	7%	Store ID: (soft-cover) 3600S12; (M) \$60; (N) \$80
Venting—Materials, Installation, and Sizing	17%	Store ID: (loose-leaf) 3600L12; (M) \$69.75; (N) \$93
Piping Systems—Materials, Installation, and Sizing	22%	
Combustion Air	20%	
Types of Gas and Specialty Gas Systems	7%	
<b>Total</b>	<b>100%</b>	

## Fire Examinations

66 Fire Inspector I 60 multiple-choice questions  
Exam fee: \$194  
Open book—2-hour time limit

Content Area	% of Total	References
General Inspection Administration	18%	1. 2009 <i>International Fire Code</i> <sup>®</sup>
General Provisions for Fire Safety	47%	Store ID: (soft-cover) 3400S09; (M) \$76.50; (N) \$102
Occupancies	17%	Store ID: (loose-leaf) 3400L09; (M) \$84.95; (N) \$113
Regulated Materials and Processes	17%	2. 2009 <i>International Building Code</i> <sup>®</sup> , chapters 1-10
<b>Total</b>	<b>100%</b>	Store ID: (soft-cover) 3000S09; (M) \$94; (N) \$125 Store ID: (loose-leaf) 3000L09; (M) \$105; (N) \$141
<b>NOTE: Only the IFC and IBC are allowed to be used while testing.</b>		3. <i>Fire Inspection and Code Enforcement</i> <sup>*</sup>
<b>The IFSTA reference may be used for study purposes only.</b>		* Reference available from IFSTA by calling 800-654-4055

NOTE: Successful candidates for the Fire Inspector I certification must provide a signed affidavit and documentation of completion of a training course compliant with NFPA 472 HazMat Awareness. The affidavit can be found at [www.iccsafe.org/Certification](http://www.iccsafe.org/Certification) (Forms & Applications tab).

Sample questions are available for most examinations on our website: To get an idea of the style and format (not content) of questions on the examinations, to go [www.iccsafe.org/exams](http://www.iccsafe.org/exams), choose the category and then examination you wish to retrieve information on, then click on "Sample."

Please visit [www.iccsafe.org/exams](http://www.iccsafe.org/exams) for expanded content outlines and the most up-to-date information. Outlines are subject to change.

Most examination references listed in this bulletin are available from the ICC Store, unless noted otherwise. More information on references, including product IDs and pricing, can be found following the exam listings. Pricing listed is for ICC Members (M) and non-members (N), and is subject to change without notice. Call 1-800-786-4452 or go to [www.iccsafe.org/store](http://www.iccsafe.org/store) to order references.



## Fire Examinations

### 66 Fire Inspector I

60 multiple-choice questions  
Exam fee: \$194  
Open book—2-hour time limit

Content Area	% of Total	References
General Inspection Administration	18%	1. 2012 <i>International Fire Code</i> ®
General Provisions for Fire Safety	47%	Store ID: (soft-cover) 3400S12; (M) \$80.25; (N) \$107
Occupancies	17%	Store ID: (loose-leaf) 3400L12; (M) \$89.25; (N) \$119
Regulated Materials and Processes	17%	2. 2012 <i>International Building Code</i> ®, chapters 1-10
<b>Total</b>	<b>100%</b>	Store ID: (soft-cover) 3000S12; (M) \$98; (N) \$131 Store ID: (loose-leaf) 3000L12; (M) \$111; (N) \$148
<b>NOTE: Only the IFC and IBC are allowed to be used while testing.</b>		3. <i>Fire Inspection and Code Enforcement</i> *
<b>The IFSTA reference may be used for study purposes only.</b>		* Reference available from IFSTA by calling 800-654-4055

NOTE: Successful candidates for the Fire Inspector I certification must provide a signed affidavit and documentation of completion of a training course compliant with NFPA 472 HazMat Awareness. The affidavit can be found at [www.iccsafe.org/Certification](http://www.iccsafe.org/Certification) (Forms & Applications tab).

### 67 Fire Inspector II

#### Prerequisite Certification:

Fire Inspector I (issued by ICC or agency accredited by ProBoard for Fire Inspector I; must be current)

50 multiple-choice questions  
Exam fee: \$194  
Open book—2-hour time limit

Content Area	% of Total	References
General Inspection Administration	20%	1. 2009 <i>International Fire Code</i> ®, including Appendix B
General Provisions for Fire Safety	36%	Store ID: (soft-cover) 3400S09; (M) \$76.50; (N) \$102
Occupancies	22%	Store ID: (loose-leaf) 3400L09; (M) \$84.95; (N) \$113
Regulated Materials and Processes	22%	2. 2009 <i>International Building Code</i> ®, chapters 1-10
<b>Total</b>	<b>100%</b>	Store ID: (soft-cover) 3000S09; (M) \$94; (N) \$125 Store ID: (loose-leaf) 3000L09; (M) \$105; (N) \$141
<b>NOTE: Only the IFC and IBC are allowed to be used while testing.</b>		3. <i>Fire Inspection and Code Enforcement</i> *
<b>The IFSTA reference may be used for study purposes only.</b>		* Reference available from IFSTA by calling 800-654-4055

### 67 Fire Inspector II

#### Prerequisite Certification:

Fire Inspector I (issued by ICC or agency accredited by ProBoard for Fire Inspector I; must be current)

50 multiple-choice questions  
Exam fee: \$194  
Open book—2-hour time limit

Content Area	% of Total	References
General Inspection Administration	20%	1. 2012 <i>International Fire Code</i> ® Including Appendix B
General Provisions for Fire Safety	36%	Store ID: (soft-cover) 3400S12; (M) \$80.25; (N) \$107
Occupancies	22%	Store ID: (loose-leaf) 3400L12; (M) \$89.25; (N) \$119
Regulated Materials and Processes	22%	2. 2012 <i>International Building Code</i> ®, chapters 1-10
<b>Total</b>	<b>100%</b>	Store ID: (soft-cover) 3000S12; (M) \$98; (N) \$131 Store ID: (loose-leaf) 3000L12; (M) \$111; (N) \$148
<b>NOTE: Only the IFC and IBC are allowed to be used while testing.</b>		3. <i>Fire Inspection and Code Enforcement</i> *
<b>The IFSTA reference may be used for study purposes only.</b>		* Reference available from IFSTA by calling 800-654-4055

## Fire Examinations (continued)

F3 Fire Plans Examiner		60 multiple-choice questions Exam fee: \$189 Open book—3-1/2-hour time limit
Content Area	% of Total	References
Administration	5%	1. 2009 <i>International Fire Code®</i> , including Appendix B
Occupancies	15%	Store ID: (soft-cover) 3400S09; (M) \$76.50; (N) \$102
Hazardous Materials	20%	Store ID: (loose-leaf) 3400L09; (M) \$84.95; (N) \$113
Fire Protection	35%	2. 2009 <i>International Building Code®</i> , chapters 1-10
Egress and Safety	25%	Store ID: (soft-cover) 3000S09; (M) \$94; (N) \$125
<b>Total</b>	<b>100%</b>	Store ID: (loose-leaf) 3000L09; (M) \$105; (N) \$141 3. 2007 NFPA 13 <i>Installation of Sprinkler Systems</i> 4. 2007 NFPA 72 <i>National Fire Alarm Code</i> Store ID: (soft-cover) 9435S07; (M) \$77.50; (N) \$86

F3 Fire Plans Examiner		60 multiple-choice questions Exam fee: \$189 Open book—3-1/2-hour time limit
Content Area	% of Total	References
Administration	5%	1. 2012 <i>International Fire Code®</i> Including Appendix B
Occupancies	15%	Store ID: (soft-cover) 3400S12; (M) \$80.25; (N) \$107
Hazardous Materials	20%	Store ID: (loose-leaf) 3400L12; (M) \$89.25; (N) \$119
Fire Protection	35%	2. 2012 <i>International Building Code®</i> , chapters 1-10
Egress and Safety	25%	Store ID: (soft-cover) 3000S12; (M) \$98; (N) \$131
<b>Total</b>	<b>100%</b>	Store ID: (loose-leaf) 3000L12; (M) \$111; (N) \$148 3. 2010 NFPA 13 <i>Installation of Sprinkler Systems</i> Store ID: (soft-cover) 9406S10; (M) \$77.50; (N) \$86 4. 2010 NFPA 72 <i>National Fire Alarm and Signaling Code</i> Store ID: (soft-cover) 9435S10; (M) \$77.50; (N) \$86

Please visit [www.iccsafe.org/exams](http://www.iccsafe.org/exams) for expanded content outlines and the most up-to-date information. Outlines are subject to change.

Most examination references listed in this bulletin are available from the ICC Store, unless noted otherwise. More information on references, including product IDs and pricing, can be found following the exam listings. Pricing listed is for ICC Members (M) and non-members (N), and is subject to change without notice. Call 1-800-786-4452 or go to [www.iccsafe.org/store](http://www.iccsafe.org/store) to order references.

## Fire Examinations (continued)

FM Certified Fire Marshal Prerequisite Examinations—Current certifications for: Fire Inspector II Fire Plans Examiner Legal/Management Module Technology Module	60 multiple-choice questions Exam fee: \$189 Open book—2-hour time limit
--	--

Content Area	% of Total	References
Public Information and Media Relations	5%	1. 2008 NFPA 921 <i>Guide for Fire and Explosion Investigations</i> 2. <i>Fire and Life Safety Educator</i> , 2nd edition (IFSTA)
Development of Lesson Plans, Fire Material, and Education Programs	12%	
Data Analysis	5%	
Fire Play, Fire Setter, and Arson Prevention	7%	
Public Relations	5%	
Fire Investigation	10%	
Due Process, Local Statutes, 4th and 14th Amendments	6%	
Fire Origin Determinations	12%	
Fire Cause Determination	7%	
Fire Scene Documentation	6%	
Evidence Retrieval and Chain of Custody	6%	
Interview Techniques and Suspect Questioning	9%	
Criminology	10%	
<b>Total</b>	<b>100%</b>	

FM Certified Fire Marshal Prerequisite Examinations—Current certifications for: Fire Inspector II Fire Plans Examiner Legal/Management Module Technology Module	60 multiple-choice questions Exam fee: \$189 Open book—2-hour time limit
--	--

Content Area	% of Total	References
Public Information and Media Relations	5%	1. 2011 NFPA 921 <i>Guide for Fire and Explosion Investigations</i> 2. <i>Fire and Life Safety Educator</i> , 2nd edition (IFSTA)
Development of Lesson Plans, Fire Material, and Education Programs	12%	
Data Analysis	5%	
Fire Play, Fire Setter, and Arson Prevention	7%	
Public Relations	5%	
Fire Investigation	10%	
Due Process, Local Statutes, 4th and 14th Amendments	6%	
Fire Origin Determinations	12%	
Fire Cause Determination	7%	
Fire Scene Documentation	6%	
Evidence Retrieval and Chain of Custody	6%	
Interview Techniques and Suspect Questioning	9%	
Criminology	10%	
<b>Total</b>	<b>100%</b>	

## Fire Examinations (continued)

CA Commercial Fire Alarm Inspector (Available July 1, 2014)

60 multiple-choice questions  
Exam fee: \$189  
Open book—2-hour time limit

Content Area	% of Total	References
Customer Service and Communication	6%	1. 2012 <i>International Fire Code</i> <sup>®</sup>
Documentation	5%	Store ID: (soft-cover) 3400S12; (M) \$80.25; (N) \$107
Ability to Read Plans	13%	Store ID: (loose-leaf) 3400L12; (M) \$89.25; (N) \$119
Wiring, Circuits, and Pathways	5%	2. 2012 <i>International Building Code</i> <sup>®</sup>
Initiating Devices	19%	Store ID: (soft-cover) 3000S12; (M) \$98; (N) \$131
Notification Appliances	22%	Store ID: (loose-leaf) 3000L12; (M) \$111; (N) \$148
Control and Communication Equipment	15%	3. 2010 NFPA 72 <i>National Fire Alarm and Signaling Code</i>
Inspecting and Testing Requirements	5%	Store ID: (soft-cover) 9435S10; (M) \$77.50; (N) \$86
Functional Control Interfaces	10%	4. 2011 NFPA 70 <i>National Electrical Code Handbook</i>
		Store ID: (soft-cover) 5003S11 (M) \$149; (N) \$165.50
		5. 2010 <i>Fire Alarm Signaling System</i> , 4th ed.
		6. 2010 NFPA <i>Pocket Guide to Fire Alarm and Signaling System Installation</i>
		7. <i>Inspector Skills</i>
		Store ID: (soft-cover) 7104S (M) \$19.95; (N) \$24.95
<b>Total</b>	<b>100%</b>	

CN Commercial Fire Alarm Plans Examiner I (Available July 1, 2014)

60 multiple-choice questions  
Exam fee: \$189  
Open book—2-hour time limit

Content Area	% of Total	References
Customer Service and Communication	6%	1. 2012 <i>International Fire Code</i> <sup>®</sup>
Documentation/Plan Reading	34%	Store ID: (soft-cover) 3400S12; (M) \$80.25; (N) \$107
Control Panel, Wiring, and Equipment	25%	Store ID: (loose-leaf) 3400L12; (M) \$89.25; (N) \$119
Calculations	20%	2. 2012 <i>International Building Code</i> <sup>®</sup>
Notification Appliances	5%	Store ID: (soft-cover) 3000S12; (M) \$98; (N) \$131
Initiating Devices	5%	Store ID: (loose-leaf) 3000L12; (M) \$111; (N) \$148
Functional Control Interfaces	5%	3. 2010 NFPA 72 <i>National Fire Alarm and Signaling Code</i>
		Store ID: (soft-cover) 9435S10; (M) \$77.50; (N) \$86
		4. 2011 NFPA 70 <i>National Electrical Code Handbook</i>
		Store ID: (soft-cover) 5003S11 (M) \$149; (N) \$165.50
		5. 2010 <i>Fire Alarm Signaling System</i> , 4th ed.
		6. 2010 NFPA <i>Pocket Guide to Fire Alarm and Signaling System Installation</i>
		7. <i>Inspector Skills</i>
		Store ID: (soft-cover) 7104S (M) \$19.95; (N) \$24.95
<b>Total</b>	<b>100%</b>	

## Fire Examinations (continued)

CR Commercial Fire Alarm Plans Examiner II (Available July 1, 2014)  
 Prerequisite Examinations—Current certifications for:  
 CN Commercial Fire Alarm Plans Examiner I

60 multiple-choice questions  
 Exam fee: \$189  
 Open book—2 1/2-hour time limit

Content Area	% of Total	References
Documentation/Plan Reading	37%	1. 2012 <i>International Fire Code</i> ®
Control Panel, Wiring, and Equipment	30%	Store ID: (soft-cover) 3400S12; (M) \$80.25; (N) \$107
Calculations	8%	Store ID: (loose-leaf) 3400L12; (M) \$89.25; (N) \$119
Notification Appliances	9%	2. 2012 <i>International Building Code</i> ®
Initiating Devices	8%	Store ID: (soft-cover) 3000S12; (M) \$98; (N) \$131
Functional Control Interfaces	8%	Store ID: (loose-leaf) 3000L12; (M) \$111; (N) \$148
		3. 2010 NFPA 72 <i>National Fire Alarm and Signaling Code</i> Store ID: (soft-cover) 9435S10; (M) \$77.50; (N) \$86
		4. 2011 NFPA 70 <i>National Electrical Code Handbook</i> Store ID: (soft-cover) 5003S11 (M) \$149; (N) \$165.50
		5. 2010 <i>Fire Alarm Signaling System</i> , 4th ed.
		6. 2010 NFPA <i>Pocket Guide to Fire Alarm and Signaling System Installation</i>
<b>Total</b>	<b>100%</b>	

CF Commercial Fire Sprinkler Inspector (Available July 1, 2014)

75 multiple-choice questions  
 Exam fee: \$189  
 Open book—2 1/2-hour time limit

Content Area	% of Total	References
Customer Service and Communication	5%	1. 2012 <i>International Fire Code</i> ®
Ability to Read Plans / Materials	7%	Store ID: (soft-cover) 3400S12; (M) \$80.25; (N) \$107
Standpipes	8%	Store ID: (loose-leaf) 3400L12; (M) \$89.25; (N) \$119
Fire Pumps	9%	2. 2013 NFPA 13 <i>Standard for the Installation of Sprinkler Systems</i>
Fire Sprinklers	8%	3. 2013 NFPA 13R <i>Standard for the Installation of Sprinkler Systems in Residential Occupancies</i>
Commodities / Hazard Class	11%	4. 2013 NFPA 14
Water Source	13%	5. 2013 NFPA 20
System and Installation Requirements	20%	6. 2013 NFPA 22
Fire Department Connections	6%	7. 2013 NFPA 24
Acceptance Testing of New Systems and Inspection of Existing Systems	13%	8. 2014 NFPA 25
		9. <i>Inspector Skills</i> Store ID: (soft-cover) 7104S (M) \$19.95; (N) \$24.95
<b>Total</b>	<b>100%</b>	

## Fire Examinations (continued)

CP Commercial Fire Sprinkler Plans Examiner (Available July 1, 2014)

75 multiple-choice questions  
Exam fee: \$189  
Open book—2 1/2-hour time limit

Content Area	% of Total	References
Customer Service and Communication	6%	1. 2012 <i>International Fire Code</i> <sup>®</sup>
Use Group / Construction Type / Hazard Classification	9%	Store ID: (soft-cover) 3400S12; (M) \$80.25; (N) \$107
Seismic and Freeze Protection	4%	Store ID: (loose-leaf) 3400L12; (M) \$89.25; (N) \$119
Hydraulic Calculations and Water Supply	26%	2. 2013 NFPA 13 <i>Standard for the Installation of Sprinkler Systems</i>
Standpipes	8%	3. 2013 NFPA 13R <i>Standard for the Installation of Sprinkler Systems in Residential Occupancies</i>
Fire Pumps	12%	4. 2013 NFPA 14
Commodities / Storage	9%	5. 2013 NFPA 20
Fire Department Connections	6%	6. 2013 NFPA 22
Materials	11%	7. 2013 NFPA 24
Ability to Read Plans	9%	8. <i>Inspector Skills</i> Store ID: (soft-cover) 7104S (M) \$19.95; (N) \$24.95
<b>Total</b>	<b>100%</b>	



## ICC/NAFED Fire Extinguisher Technician Examinations

AFFILIATE

FE Certified Portable Fire Extinguisher Technician

100 multiple-choice questions  
Exam fee: \$189  
Open book—2-hour time limit

Content Area	% of Total	Reference
Inspection	4%	1. 2007 NFPA 10— <i>Standard for Portable Fire Extinguishers</i>
Annual Maintenance	20%	2. 2009 <i>International Fire Code</i> <sup>®</sup>
6-Year and Internal Maintenance	10%	Store ID: (soft-cover) 3400S09; (M) \$76.50; (N) \$102
Hydrostatic Testing	10%	Store ID: (loose-leaf) 3400L09; (M) \$84.95; (N) \$113
Recharging	20%	3. CFR 29 Part 1910 Subpart I ( <a href="http://www.osha.gov">www.osha.gov</a> )
Selection, Placement, and Installation	20%	4. CGA <i>C-1 Methods of Hydrostatic Testing of Compressed Gas Cylinders</i>
Safety	4%	
Recordkeeping and Documentation	12%	The CGA reference above can be obtained by contacting CGA at 703-788-2700 or by email at <a href="mailto:customerservice@cganet.com">customerservice@cganet.com</a> .
<b>Total</b>	<b>100%</b>	

FK Pre-engineered Kitchen Fire Extinguishing System Technician

80 multiple-choice questions  
Exam fee: \$189  
Open book—2-hour time limit

Content Area	% of Total	Reference
Occupancies and Hazards Identification	12%	1. 2009 <i>International Fire Code</i> <sup>®</sup>
General Component Requirements	20%	Store ID: (soft-cover) 3400S09; (M) \$74.25; (N) \$99
Hoods and Exhaust Systems	10%	Store ID: (loose-leaf) 3400L09; (M) \$82.50; (N) \$110
Administration and Records	6%	2. 2009 <i>International Mechanical Code</i> <sup>®</sup>
Installations	24%	Store ID: (soft-cover) 3300S09; (M) \$55.50; (N) \$74
Inspection	4%	Store ID: (loose-leaf) 3300L09; (M) \$64.50; (N) \$86
Maintenance and Recharge	24%	3. 2009 NFPA 17A— <i>Standard for Wet Chemical Extinguishing Systems</i>
<b>Total</b>	<b>100%</b>	4. 2008 NFPA 96— <i>Standard for Ventilation Control and Fire Protection of Commercial Cooking Operations</i>



AFFILIATE

## ICC/NAFED Fire Extinguisher Technician Examinations (continued)

### FK Pre-engineered Kitchen Fire Extinguishing System Technician

80 multiple-choice questions  
Exam fee: \$189  
Open book—2-hour time limit

Content Area	% of Total	References
Occupancies and Hazards Identification	12%	1. 2012 <i>International Fire Code</i> ®
General Component Requirements	20%	Store ID: (soft-cover) 3400S12; (M) \$80.25; (N) \$107
Hoods and Exhaust Systems	10%	Store ID: (loose-leaf) 3400L12; (M) \$89.25; (N) \$119
Administration and Records	6%	2. 2012 <i>International Mechanical Code</i> ®
Installations	24%	Store ID: (soft-cover) 3300S12; (M) \$69.75; (N) \$93
Inspection	4%	Store ID: (loose-leaf) 3300L12; (M) \$60; (N) \$80
Maintenance and Recharge	24%	3. 2009 NFPA 17A— <i>Standard for Wet Chemical Extinguishing Systems</i>
		4. 2008 NFPA 96— <i>Standard for Ventilation Control and Fire Protection of Commercial Cooking Operations</i>
<b>Total</b>	<b>100%</b>	

### FN Pre-engineered Industrial Fire Extinguishing System Technician

80 multiple-choice questions  
Exam fee: \$189  
Open book—2-hour time limit

Content Area	% of Total	Reference
Occupancies and Hazards Identification	18%	1. 2009 <i>International Fire Code</i> ®
General Component Requirements	20%	Store ID: (soft-cover) 3400S09; (M) \$74.25; (N) \$99
Hoods, Ventilation, and Exhaust Systems	10%	Store ID: (loose-leaf) 3400L09; (M) \$82.50; (N) \$110
Administration and Records	6%	2. 2009 <i>International Mechanical Code</i> ®
Installations	24%	Store ID: (soft-cover) 3300S09; (M) \$55.50; (N) \$74
Inspection	2%	Store ID: (loose-leaf) 3300L09; (M) \$64.50; (N) \$86
Maintenance and Recharge	20%	3. 2009 NFPA 17— <i>Standard for Dry Chemical Extinguishing Systems</i>
<b>Total</b>	<b>100%</b>	4. 2004 NFPA 2001— <i>Standard on Clean Agent Fire Extinguishing Systems</i>
		5. 2007 NFPA 33— <i>Standard for Spray Application using Flammable or Combustible Materials</i>
		6. 2007 NFPA 34— <i>Standard for Dipping and Coating Processes Using Flammable or Combustible Materials</i>





AFFILIATE

## ICC/NAFED Fire Extinguisher Technician Examinations (continued)

**FN Pre-engineered Industrial Fire Extinguishing System Technician** 80 multiple-choice questions  
Exam fee: \$189  
Open book—2-hour time limit

Content Area	% of Total	References
Occupancies and Hazards Identification	18%	1. 2012 <i>International Fire Code</i> <sup>®</sup>
General Component Requirements	20%	Store ID: (soft-cover) 3400S12; (M) \$80.25; (N) \$107
Hoods, Ventilation, and Exhaust Systems	10%	Store ID: (loose-leaf) 3400L12; (M) \$89.25; (N) \$119
Administration and Records	6%	2. 2012 <i>International Mechanical Code</i> <sup>®</sup>
Installations	24%	Store ID: (soft-cover) 3300S12; (M) \$69.75; (N) \$93
Inspection	2%	Store ID: (loose-leaf) 3300L12; (M) \$60; (N) \$80
Maintenance and Recharge	20%	3. 2009 NFPA 17— <i>Standard for Dry Chemical Extinguishing Systems</i>
<b>Total</b>	<b>100%</b>	4. 2008 NFPA 2001— <i>Standard on Clean Agent Fire Extinguishing Systems</i> 5. 2011 NFPA 33— <i>Standard for Spray Application Using Flammable or Combustible Materials</i> 6. 2011 NFPA 34— <i>Standard for Dipping and Coating Processes Using Flammable or Combustible Materials</i>

## Energy Conservation Examinations

**77 Commercial Energy Inspector** 50 multiple-choice questions  
Exam fee: \$189  
Open book—2-hour time limit

Content Area	% of Total	Reference
General Plan Review Issues	7%	2009 <i>International Energy Conservation Code</i> <sup>®</sup>
Building Envelope	38%	Store ID: (soft-cover) 3800S09; (M) \$33; (N) \$44
Mechanical Systems	25%	
Electrical Power and Lighting Systems	26%	
Building Service Water Heating Systems and Equipment	4%	
<b>Total</b>	<b>100%</b>	

**77 Commercial Energy Inspector** 50 multiple-choice questions  
Exam fee: \$189  
Open book—2-hour time limit

Content Area	% of Total	Reference
General Plan Review Issues	7%	2012 <i>International Energy Conservation Code</i> <sup>®</sup>
Building Envelope	38%	Store ID: (soft-cover) 3800S12; (M) \$33; (N) \$44
Mechanical Systems	25%	
Electrical Power and Lighting Systems	26%	
Building Service Water Heating Systems and Equipment	4%	
<b>Total</b>	<b>100%</b>	

## Energy Conservation Examinations (continued)

78 Commercial Energy Plans Examiner		70 multiple-choice questions Exam fee: \$189 Open book—3-1/2-hour time limit
Content Area	% of Total	Reference
General Plan Review Issues	16%	2009 <i>International Energy Conservation Code</i> ®
Building Envelope	27%	Store ID: (soft-cover) 3800S09; (M) \$31; (N) \$41
Mechanical Systems	26%	
Electrical Power and Lighting Systems	27%	
Building Service Water Heating Systems and Equipment	4%	
<b>Total</b>	<b>100%</b>	

78 Commercial Energy Plans Examiner		70 multiple-choice questions Exam fee: \$189 Open book—3-1/2-hour time limit
Content Area	% of Total	Reference
General Plan Review Issues	16%	2012 <i>International Energy Conservation Code</i> ®
Building Envelope	27%	Store ID: (soft-cover) 3800S12; (M) \$33; (N) \$44
Mechanical Systems	26%	
Electrical Power and Lighting Systems	27%	
Building Service Water Heating Systems and Equipment	4%	
<b>Total</b>	<b>100%</b>	

79 Residential Energy Inspector/Plans Examiner		50 multiple-choice questions Exam fee: \$189 Open book—2-hour time limit
Content Area	% of Total	Reference
General Plans and Inspection	28%	2009 <i>International Energy Conservation Code</i> ®
Alterations, Additions, and Change of Use or Occupancy	16%	Store ID: (soft-cover) 3800S09; (M) \$31; (N) \$41
Building Envelope	46%	
Mechanical Systems	10%	
<b>Total</b>	<b>100%</b>	

79 Residential Energy Inspector/Plans Examiner		50 multiple-choice questions Exam fee: \$189 Open book—2-hour time limit
Content Area	% of Total	Reference
General Plans and Inspection	28%	2012 <i>International Energy Conservation Code</i> ®
Alterations, Additions, and Change of Use or Occupancy	16%	Store ID: (soft-cover) 3800S12; (M) \$33; (N) \$44
Building Envelope	46%	
Mechanical Systems	10%	
<b>Total</b>	<b>100%</b>	

Sample questions are available for most examinations on our website: To get an idea of the style and format (not content) of questions on the examinations, to go [www.iccsafe.org/exams](http://www.iccsafe.org/exams), choose the category and then examination you wish to retrieve information on, then click on "Sample."

## Energy Conservation Examinations (continued)

### EA Commercial Energy Inspector with ASHRAE 90.1

50 multiple-choice questions  
Exam fee: \$189  
Open book—2-hour time limit

Content Area	% of Total	Reference
General Plan Review	8%	2012 <i>International Energy Conservation Code</i> ®
Building Envelope	40%	Store ID: (soft-cover) 3800S12; (M) \$33; (N) \$44
Mechanical Systems	22%	2010 ANSI/ASHRAE/IES Standard 90.1
Electrical Power and Lighting Systems	26%	Store ID: (soft-cover) 9568S10; (M) \$112; (N) \$125
Building Service Water Heating	8%	
<b>Total</b>	<b>100%</b>	

### EB Commercial Energy Plans Examiner with ASHRAE 90.1

70 multiple-choice questions  
Exam fee: \$189  
Open book—3-1/2-hour time limit

Content Area	% of Total	Reference
General Plan Review Issues	16%	2012 <i>International Energy Conservation Code</i> ®
Building Envelope	27%	Store ID: (soft-cover) 3800S12; (M) \$33; (N) \$44
Mechanical Systems	26%	2010 ANSI/ASHRAE/IES Standard 90.1
Electrical Power and Lighting Systems	27%	Store ID: (soft-cover) 9568S10; (M) \$112; (N) \$125
Building Service Water Heating Systems and Equipment	4%	
<b>Total</b>	<b>100%</b>	

## Green Building Examinations

### G1 Green Building—Residential Examiner

50 multiple-choice questions  
Exam fee: \$189  
Open book—2-hour time limit

Content Area	% of Total	References
Green Building Introduction	20%	2012 <i>International Energy Conservation Code</i> ®
General Plans and Inspections	15%	Store ID: (soft-cover) 3800S12; (M) \$33; (N) \$44
Site Selection, Layout, and Development	15%	2012 ICC 700 <i>National Green Building Standard</i>
Building Design and Systems	20%	Store ID: (soft-cover) 9551S12 (M) \$32; (N) \$36
Resource Efficiency	15%	2012 <i>International Green Construction Code</i> ®
Indoor Air Quality	15%	Store ID: (soft-cover) 3750S12; (M) \$107; (N) \$142
<b>Total</b>	<b>100%</b>	

Please visit [www.iccsafe.org/exams](http://www.iccsafe.org/exams) for expanded content outlines and the most up-to-date information. Outlines are subject to change.

Most examination references listed in this bulletin are available from the ICC Store, unless noted otherwise. More information on references, including product IDs and pricing, can be found following the exam listings. Pricing listed is for ICC Members (M) and non-members (N), and is subject to change without notice. Call 1-800-786-4452 or go to [www.iccsafe.org/store](http://www.iccsafe.org/store) to order references.

## Green Building Examinations—continued

### G2 IgCC Commercial Inspector

60 multiple-choice questions  
Exam fee: \$189  
Open book—2-hour time limit

Content Area	% of Total	Reference
Administration	10%	2012 <i>International Green Construction Code</i> <sup>®</sup>
Land and Site Planning	20%	Store ID: (soft-cover) 3750S12; (M) \$110; (N) \$142
Conservation and Efficiency of Materials	35%	
Indoor Air Quality	25%	
Existing Buildings and Site Development	10%	
<b>Total</b>	<b>100%</b>	

### G3 IgCC Commercial Inspector with ASHRAE 189.1

60 multiple-choice questions  
Exam fee: \$189  
Open book—2-hour time limit

Content Area	% of Total	References
Administration	10%	2012 <i>International Green Construction Code</i> <sup>®</sup>
Land and Site Planning	25%	Store ID: (soft-cover) 3750S12; (M) \$110; (N) \$142
Conservation and Efficiency of Materials	40%	[includes ASHRAE Standard 189.1-2011]
Indoor Air Quality	25%	
<b>Total</b>	<b>100%</b>	

### G4 IgCC Plans Examiner

60 multiple-choice questions  
Exam fee: \$189  
Open book—2-hour time limit

Content Area	% of Total	Reference
Administration	10%	2012 <i>International Green Construction Code</i> <sup>®</sup>
Land and Site Planning	20%	Store ID: (soft-cover) 3750S12; (M) \$110; (N) \$142
Conservation and Efficiency of Materials	35%	
Indoor Air Quality	25%	
Existing Buildings and Site Development	10%	
<b>Total</b>	<b>100%</b>	

### G5 IgCC Plans Examiner with ASHRAE 189.1

60 multiple-choice questions  
Exam fee: \$189  
Open book—2-hour time limit

Content Area	% of Total	References
Administration	10%	2012 <i>International Green Construction Code</i> <sup>®</sup>
Land and Site Planning	25%	Store ID: (soft-cover) 3750S12; (M) \$110; (N) \$142
Conservation and Efficiency of Materials	40%	[includes ASHRAE Standard 189.1-2011]
Indoor Air Quality	25%	
<b>Total</b>	<b>100%</b>	

## Certified Building Official Examinations

Exams based on the 2009 International Codes and/or 2008 National Electrical Code will appear with this color heading.

Exams based on the 2012 International Codes and/or 2011 National Electrical Code will appear with this color heading.

### 01 Legal/Management Module

100 multiple-choice questions

Exam fee: \$116

Open book—2-hour time limit

Content Area	% of Total	References
Financial Management	9%	1. 2009 <i>International Building Code</i> ®
Records Management	11%	Store ID: (soft-cover) 3000S09; (M) \$94; (N) \$125
Personnel Management	30%	Store ID: (loose-leaf) 3000L09; (M) \$105; (N) \$141
Interagency, Legislative, and Public Communication	16%	2. 2009 <i>International Fire Code</i> ®
Code Enforcement	34%	Store ID: (soft-cover) 3400S09; (M) \$76.50; (N) \$102
<b>Total</b>	<b>100%</b>	Store ID: (loose-leaf) 3400L09; (M) \$84.95; (N) \$113
<p><b>Please note:</b> Individuals currently certified as either <b>ICC Combination Inspector</b> or <b>ICC Combination Plans Examiner</b> are not required to pass the technology examination to obtain the ICC CBO certification.</p> <p>Candidates that complete one of the two examinations (Technology or Legal/ Management Modules) have <b>three years</b> to complete certification.</p>		<p>3. 2009 <i>International Property Maintenance Code</i>®</p> <p>Store ID: (soft-cover) 3500S09; (M) \$27; (N) \$36</p> <p>4. 2009 <i>International Residential Code</i>®</p> <p>Store ID (2009—soft-cover): 3100S09; (M) \$86; (N) \$114</p> <p>Store ID (2009—loose-leaf): 3100L09; (M) \$101; (N) \$134</p> <p>5. 2002 <i>Legal Aspects of Code Administration</i></p> <p>Store ID: (soft-cover) 1007S01; (M) \$30; (N) \$38</p> <p>6. 2007 or 2012 <i>Building Department Administration</i></p> <p>Store ID: (hard-cover) 1013S4; (M) \$89.95; (N) \$112</p> <p>7. <i>Basic Code Enforcement</i> (2002 or newer edition)</p> <p>Store ID: (soft-cover) 1016S02; (M) \$30; (N) \$40</p> <p>8. <i>Human Resource Management: An Essential Guide</i>, 3rd Ed.</p> <p>Store ID: (hard-cover) 9623S3; (M) \$83; (N) \$92</p> <p>9. <i>A Budgeting Guide for Local Government</i>, 2nd or 3rd Ed.</p>

Please visit [www.iccsafe.org/exams](http://www.iccsafe.org/exams) for expanded content outlines and the most up-to-date information. Outlines are subject to change.

Most examination references listed in this bulletin are available from the ICC Store, unless noted otherwise. More information on references, including product IDs and pricing, can be found following the exam listings. Pricing listed is for ICC Members (M) and non-members (N), and is subject to change without notice. Call 1-800-786-4452 or go to [www.iccsafe.org/store](http://www.iccsafe.org/store) to order references.

## Certified Building Official Examinations (continued)

01 Legal/Management Module

100 multiple-choice questions  
Exam fee: \$116  
Open book—2-hour time limit

Content Area	% of Total	References
Financial Management	9%	1. 2012 <i>International Building Code</i> <sup>®</sup>
Records Management	11%	Store ID: (soft-cover) 3000S12; (M) \$98; (N) \$131
Personnel Management	30%	Store ID: (loose-leaf) 3000L12; (M) \$111; (N) \$148
Interagency, Legislative, and Public Communication	16%	2. 2012 <i>International Fire Code</i> <sup>®</sup>
Code Enforcement	34%	Store ID: (soft-cover) 3400S12; (M) \$80.25; (N) \$107
<b>Total</b>	<b>100%</b>	Store ID: (loose-leaf) 3400L12; (M) \$89.25; (N) \$119
<p><b>Please note:</b> Individuals currently certified as either <b>ICC Combination Inspector</b> or <b>ICC Combination Plans Examiner</b> are not required to pass the technology examination to obtain the ICC CBO certification.</p> <p>Candidates that complete one of the two examinations (Technology or Legal/ Management Modules) have <b>three years</b> to complete certification.</p>		<p>3. 2012 <i>International Property Maintenance Code</i><sup>®</sup></p> <p>Store ID: (soft-cover) 3500S12; (M) \$29.25; (N) \$39</p> <p>4. 2012 <i>International Residential Code</i><sup>®</sup></p> <p>Store ID: (soft-cover) 3100S12; (M) \$91.50; (N) \$122</p> <p>Store ID: (loose-leaf) 3100L12; (M) \$107; (N) \$143</p> <p>5. 2002 <i>Legal Aspects of Code Administration</i></p> <p>Store ID: (soft-cover) 1007S01; (M) \$30; (N) \$38</p> <p>6. 2007 or 2012 <i>Building Department Administration</i></p> <p>Store ID: (hard-cover) 1013S4; (M) \$89.95; (N) \$112</p> <p>7. <i>Basic Code Enforcement</i> (2002 or newer edition)</p> <p>Store ID: (soft-cover) 1016S02; (M) \$30; (N) \$40</p> <p>8. <i>Human Resource Management: An Essential Guide</i>, 3rd Ed.</p> <p>Store ID: (hard-cover) 9623S3; (M) \$83; (N) \$92</p> <p>9. <i>A Budgeting Guide for Local Government</i>, 2nd or 3rd Ed.</p>

## Certified Building Official Examinations (continued)

Exams based on the 2009 International Codes and/or 2008 National Electrical Code will appear with this color heading.

Exams based on the 2012 International Codes and/or 2011 National Electrical Code will appear with this color heading.

### 02 Technology Module

75 multiple-choice questions

Exam fee: \$116

Open book—2-hour time limit

Content Area	% of Total	References
Architectural Plans Review	35%	1. 2009 <i>International Building Code</i> ®
Structural Plans Review	12%	Store ID: (soft-cover) 3000S09; (M) \$94; (N) \$125
Building Systems Plans Review	18%	Store ID: (loose-leaf) 3000L09; (M) \$105; (N) \$141
Field Inspection	35%	2. 2009 <i>International Fire Code</i> ®
<b>Total</b>	<b>100%</b>	Store ID: (soft-cover) 3400S09; (M) \$76.50; (N) \$102 Store ID: (loose-leaf) 3400L09; (M) \$84.95; (N) \$113
<p><b>Please note:</b> Individuals currently certified as either <b>ICC Combination Inspector</b> or <b>ICC Combination Plans Examiner</b> are not required to pass the technology examination to obtain the ICC CBO certification.</p> <p>Candidates that complete one of the two examinations (Technology or Legal/Management Modules) have <b>three years</b> to complete certification.</p>		
		3. 2009 <i>International Fuel Gas Code</i> ®
		Store ID: (soft-cover) 3600S09; (M) \$57; (N) \$76 Store ID: (loose-leaf) 3600L09; (M) \$66.50; (N) \$88.50
		4. 2009 <i>International Mechanical Code</i> ®
		Store ID: (soft-cover) 3300S09; (M) \$57; (N) \$76 Store ID: (loose-leaf) 3300L09; (M) \$66.50; (N) \$88.50
		5. 2009 <i>International Plumbing Code</i> ®
		Store ID: (soft-cover) 3200S09; (M) \$60; (N) \$80 Store ID: (loose-leaf) 3200L09; (M) \$69.50; (N) \$92.95
		6. 2009 <i>International Energy Conservation Code</i> ®
		Store ID: (soft-cover) 3800S09; (M) \$31; (N) \$41
		7. 2009 <i>International Residential Code</i> ®
		Store ID: (soft-cover) 3100S09; (M) \$86; (N) \$114 Store ID: (loose-leaf) 3100L09; (M) \$101; (N) \$134
		8. ICC/ANSI A117.1-2003 <i>Standard on Accessible and Usable Buildings and Facilities</i> ®
		Store ID: (soft-cover) 9033S03; (M) \$36.95; (N) \$46
		9. ASCE/SEI 24-05 <i>Flood Resistant Design and Construction</i>
		Store ID: (soft-cover) 9020S05; (M) \$53; (N) \$59
		10. 2008 <i>National Electrical Code</i>
		Store ID: (soft-cover) 5000S08; (M) \$65; (N) \$73 Store ID: (loose-leaf) 5000L08; (M) \$69.95; (N) \$84.95

## Certified Building Official Examinations (continued)

02 Technology Module

75 multiple-choice questions  
Exam fee: \$116  
Open book—2-hour time limit

Content Area	% of Total	References
Architectural Plans Review	35%	1. 2012 <i>International Building Code</i> <sup>®</sup>
Structural Plans Review	12%	Store ID: (soft-cover) 3000S12; (M) \$98; (N) \$131
Building Systems Plans Review	18%	Store ID: (loose-leaf) 3000L12; (M) \$111; (N) \$148
Field Inspection	35%	2. 2012 <i>International Fire Code</i> <sup>®</sup>
<b>Total</b>	<b>100%</b>	Store ID: (soft-cover) 3400S12; (M) \$80.25; (N) \$107 Store ID: (loose-leaf) 3400L12; (M) \$89.25; (N) \$119
<p><b>Please note:</b> Individuals currently certified as either <b>ICC Combination Inspector</b> or <b>ICC Combination Plans Examiner</b> are not required to pass the technology examination to obtain the ICC CBO certification.</p> <p>Candidates that complete one of the two examinations (Technology or Legal/Management Modules) have <b>three years</b> to complete certification.</p>		
		3. 2012 <i>International Fuel Gas Code</i> <sup>®</sup>
		Store ID: (soft-cover) 3600S12; (M) \$60; (N) \$80
		Store ID: (loose-leaf) 3600L12; (M) \$69.75; (N) \$93
		4. 2012 <i>International Mechanical Code</i> <sup>®</sup>
		Store ID: (soft-cover) 3300S12; (M) \$60; (N) \$80
		Store ID: (loose-leaf) 3300L12; (M) \$69.75; (N) \$93
		5. 2012 <i>International Plumbing Code</i> <sup>®</sup>
		Store ID: (soft-cover) 3200S12; (M) \$63; (N) \$84
		Store ID: (loose-leaf) 3200L12; (M) \$73.50; (N) \$98
		6. 2012 <i>International Energy Conservation Code</i> <sup>®</sup>
		Store ID: (soft-cover) 3800S12; (M) \$33; (N) \$44
		7. 2012 <i>International Residential Code</i> <sup>®</sup>
		Store ID: (soft-cover) 3100S12; (M) \$91.50; (N) \$122
		Store ID: (loose-leaf) 3100L12; (M) \$107; (N) \$143
		8. ICC/ANSI A117.1-2009 <i>Standard on Accessible and Usable Buildings and Facilities</i> <sup>®</sup>
		Store ID: (soft-cover) 9033S09; (M) \$36.95; (N) \$46
		9. ASCE/SEI 24-05 <i>Flood Resistant Design and Construction</i>
		Store ID: (soft-cover) 9020S05; (M) \$53; (N) \$59
		10. 2011 <i>National Electrical Code</i>
		Store ID: (soft-cover) 5000S11; (M) \$65; (N) \$73
		Store ID: (loose-leaf) 5000L11; (M) \$69.95; (N) \$84.95



## Special Inspector Examinations

Exams based on the 2009 International Codes and/or 2008 National Electrical Code will appear with this color heading.

Exams based on the 2012 International Codes and/or 2011 National Electrical Code will appear with this color heading.

### 92 Prestressed Concrete Special Inspector

90 multiple-choice questions

#### Prerequisite Certification:

Exam fee: \$210

Reinforced Concrete Special Inspector (must meet all requirements for exam ID 47)

Open book—3-1/2-hour time limit

Two-part examination; passing score on both parts is required.

Content Area	% of Total	References
General Requirements	3%	1. 2009 <i>International Building Code</i> <sup>®</sup>
Concrete Quality	5%	Store ID: (soft-cover) 3000S09; (M) \$94; (N) \$125
Reinforcement	48%	Store ID: (loose-leaf) 3000L09; (M) \$105; (N) \$141
Prestressing and Grouting	35%	2. ACI 318-08 <i>Building Code Requirements for Structural Concrete and Commentary</i>
Formwork, Joints, and Embeds	4%	
Concrete Placement, Protection, and Curing	5%	Store ID: (soft-cover) 9021S08; (M) \$139.50; (N) \$174.50
<b>Total Code and Plan Reading</b>	<b>100%</b>	3. MNL 116 <i>Manual for Quality Control for Plants and Production of Structural Precast Concrete Products</i> , 4th edition
		Store ID: (soft-cover) 9133S00; (M) \$76; (N) \$85
		4. ASTM Standards A 416/A 416 M-06 and A 421/A 421M-02
		5. 2000 <i>Field Procedures Manual for Unbonded Single Strand Tendons</i> , 3rd edition
		<a href="http://www.post-tensioning.org">www.post-tensioning.org</a>
		6. 2000 <i>Specifications for Unbonded Single Strand Tendons</i> , 2nd edition
		Store ID: (soft-cover) 9631S-PTI M10.2-00; (M) \$26; (N) \$29
		7. <i>Model Program for Special Inspection</i> <sup>®</sup>
		Store ID: (soft-cover) 1035S12; (M) \$17.75; (N) \$22
		8. 2004 <i>Recommendations for Prestressed Rock and Soil Anchors</i> , 4th ed. ** <a href="http://www.post-tensioning.org/store/">www.post-tensioning.org/store/</a>
		<a href="#">PTI DC35.1-04: recommendations for prestressed Rock and soil anchors</a>
<p><b>Please note:</b> Part 1 of the exam has 60 questions that refer to the codes. Part 2 has 30 questions that refer to plans. Be sure you have the plans before starting the exam. YOU MUST DECIDE HOW TO MANAGE YOUR TIME FOR THE TWO PARTS OF THE EXAM. Once you leave Part 1, you CANNOT go back to it. You will have the remaining time for Part 2. As a guide to you, the exam is designed to require approximately 1-1/2 hours for the plan reading part.</p> <p>Listed ASTM Standards may be found in <i>ASTM Standards: As Referenced in the 2009 IBC</i>, ACI Publication SP-71, or at <a href="http://www.astm.org">www.astm.org</a>. ASTM Standards are those referenced in the 2009 IBC. Test items are based on the year of issue indicated.</p> <p>**An updated version is expected Fall 2014. The existing version (4th Edition, published in 2004) is available in a digital file only. The digital file is not available for immediate download. It will be emailed to you once your order is processed.</p>		

Sample questions are available for most examinations on our website: To get an idea of the style and format (not content) of questions on the examinations, to go [www.iccsafe.org/exams](http://www.iccsafe.org/exams), choose the category and then examination you wish to retrieve information on, then click on "Sample."

Please visit [www.iccsafe.org/exams](http://www.iccsafe.org/exams) for expanded content outlines and the most up-to-date information. Outlines are subject to change.

Most examination references listed in this bulletin are available from the ICC Store, unless noted otherwise. More information on references, including product IDs and pricing, can be found following the exam listings. Pricing listed is for ICC Members (M) and non-members (N), and is subject to change without notice. Call 1-800-786-4452 or go to [www.iccsafe.org/store](http://www.iccsafe.org/store) to order references.

## Special Inspector Examinations (continued)

92 Prestressed Concrete Special Inspector

90 multiple-choice questions

Prerequisite Certification:

Exam fee: \$210

Reinforced Concrete Special Inspector (must meet all requirements for exam ID 47)

Open book—3-1/2-hour time limit

Two-part examination; passing score on both parts is required.

Content Area	% of Total	References	
General Requirements	3%	1. 2012 <i>International Building Code</i> ®	
Concrete Quality	5%	Store ID: (soft-cover) 3000S12; (M) \$98; (N) \$131	
Reinforcement	48%	Store ID: (loose-leaf) 3000L12; (M) \$111; (N) \$148	
Prestressing and Grouting	35%	2. ACI 318-11 <i>Building Code Requirements for Structural Concrete and Commentary</i>	
Formwork, Joints, and Embeds	4%		
Concrete Placement, Protection, and Curing	5%	Store ID: (soft-cover) 9021S11; (M) \$154; (N) \$192.50	
<b>Total Code and Plan Reading</b>	<b>100%</b>	3. MNL 116 <i>Manual for Quality Control for Plants and Production of Structural Precast Concrete Products</i> , 4th edition	
<p><b>Please note:</b> Part 1 of the exam has 60 questions that refer to the codes. Part 2 has 30 questions that refer to plans. Be sure you have the plans before starting the exam. YOU MUST DECIDE HOW TO MANAGE YOUR TIME FOR THE TWO PARTS OF THE EXAM. Once you leave Part 1, you CANNOT go back to it. You will have the remaining time for Part 2. As a guide to you, the exam is designed to require approximately 1-1/2 hours for the plan reading part.</p> <p>Listed ASTM Standards may be found in <i>ASTM Standards: As Referenced in the 2009 IBC</i>, ACI Publication SP-71, or at <a href="http://www.astm.org">www.astm.org</a>. ASTM Standards are those referenced in the 2012 IBC. Test items are based on the year of issue indicated.</p> <p>**An updated version is expected Fall 2014. The existing version (4th Edition, published in 2004) is available in a digital file only. The digital file is not available for immediate download. It will be emailed to you once your order is processed.</p>		Store ID: (soft-cover) 9133S00; (M) \$76; (N) \$85	
			4. ASTM Standards A 416/A 416 M-06 and A 421/A 421M-02
			5. 2000 <i>Field Procedures Manual for Unbonded Single Strand Tendons</i> , 3rd edition <a href="http://www.post-tensioning.org">www.post-tensioning.org</a>
			6. 2000 <i>Specifications for Unbonded Single Strand Tendons</i> , 2nd edition
			Store ID: (soft-cover) 9631S-PTI M10.2-00; (M) \$26; (N) \$29
			7. <i>Model Program for Special Inspection</i> ®
			Store ID: (soft-cover) 1035S12; (M) \$17.75; (N) \$22
			8. 2004 <i>Recommendations for Prestressed Rock and Soil Anchors</i> , 4th ed. ** <a href="http://www.post-tensioning.org/store/PTI_DC35.1-04:recommendations_for_prestressed_Rock_and_soil_anchors">www.post-tensioning.org/store/PTI_DC35.1-04:recommendations_for_prestressed_Rock_and_soil_anchors</a>

## Special Inspector Examinations (continued)

### 84 Structural Masonry Special Inspector

90 multiple-choice questions

Exam fee: \$210

Two-part examination; passing score on both parts is required.

Open book—3-1/2-hour time limit

Content Area	% of Total	References
General Requirements	9%	1. 2009 <i>International Building Code</i> <sup>®</sup>
Materials	16%	Store ID: (soft-cover) 3000S09; (M) \$94; (N) \$125
Masonry Placement	21%	Store ID: (loose-leaf) 3000L09; (M) \$105; (N) \$141
Reinforcement and Connector Placement	30%	2. ASTM Standards A 615 A/615M-04, A 951-02, C 476-02,
Grout Placement	24%	C 1019-05, C 1314-07, C 216-07, C 270-07, C 62-05,
<b>Total Code and Plan Reading</b>	<b>100%</b>	C 90-06b, and C 140-07
<p><b>Please note:</b> Part 1 of the exam has 60 questions that refer to the codes. Part 2 has 30 questions that refer to plans. Be sure you have the plans before starting the exam. YOU MUST DECIDE HOW TO MANAGE YOUR TIME FOR THE TWO PARTS OF THE EXAM. Once you leave Part 1, you CANNOT go back to it. You will have the remaining time for Part 2. As a guide to you, the exam is designed to require approximately 1-1/2 hours for the plan reading part.</p> <p>Listed ASTM Standards may be found in <i>ASTM Standards: As Referenced in the 2009 IBC</i>, ACI Publication SP-71, or at <a href="http://www.astm.org">www.astm.org</a>. ASTM Standards are those referenced in the 2009 IBC. Test items are based on the year of issue indicated.</p> <p>For more information on the 2009 <i>Masonry Codes and Specification Compilation</i>, visit <a href="http://www.iccsafe.org/store">www.iccsafe.org/store</a>.</p>		<p>3. TMS 402-08/ACI 530-08/ASCE 5-08 and TMS 602-08/ ACI 530.1-08/ASCE 6-08 <i>Building Code Requirements for Masonry Structures/Specification for Masonry Structures</i> Store ID: (soft-cover) 9026S08; (M) \$99; (N) \$100</p> <p>4. <i>Reinforced Grouted Brick Masonry</i>, 14th or 15th edition Store ID: (soft-cover) 9028S15; (M) \$31.50; (N) \$35.95</p> <p>5. <i>Reinforced Concrete Masonry Construction Inspector's Handbook</i>, 6th or 7th edition Store ID: (soft-cover) 9086S7; (M) \$35.95; (N) \$39.95</p> <p>6. <i>Model Program for Special Inspection</i><sup>®</sup> Store ID: (soft-cover) 1035S12; (M) \$17.75; (N) \$22</p> <p>2009 <i>Masonry Codes and Specifications Compilation</i>** ** This reference consists <b>only</b> of key portions of the 2009 IBC and 2009 IRC; TMS 402 and TMS 602 in their entirety; and <i>Model Program for Special Inspection</i>. This compilation may be used in lieu of these specifically noted individual references. Store ID: (soft-cover) 9620S09; (M) \$143; (N) \$159</p>

Note: The Masonry Society (TMS) co-sponsors the Structural Masonry Special Inspector exam with the Code Council, as a national certification for masonry inspection.

Please visit [www.iccsafe.org/exams](http://www.iccsafe.org/exams) for expanded content outlines and the most up-to-date information. Outlines are subject to change.

Most examination references listed in this bulletin are available from the ICC Store, unless noted otherwise; product IDs are listed with the references. Pricing listed is for ICC Members (M) and non-members (N). Call 1-800-786-4452 or go to [www.iccsafe.org](http://www.iccsafe.org) and click on Store to order references. Pricing is subject to change without notice.

## Special Inspector Examinations (continued)

84 Structural Masonry Special Inspector

90 multiple-choice questions

Exam fee: \$210

Two-part examination; passing score on both parts is required.

Open book—3-1/2-hour time limit

Content Area	% of Total	References	
General Requirements	9%	1. 2012 <i>International Building Code</i> <sup>®</sup>	
Materials	16%	Store ID: (soft-cover) 3000S12; (M) \$98; (N) \$131	
Masonry Placement	21%	Store ID: (loose-leaf) 3000L12; (M) \$111; (N) \$148	
Reinforcement and Connector Placement	30%	2. ASTM Standards A 615 A/615M-09, A 951-06, C 476-10,	
Grout Placement	24%	C 1019-09, C 1314-07, C 216-07a, C 270-08a,	
<b>Total Code and Plan Reading</b>	<b>100%</b>	C 90-08, C62-08, and C 140-08a	
<p><b>Please note:</b> Part 1 of the exam has 60 questions that refer to the codes. Part 2 has 30 questions that refer to plans. Be sure you have the plans before starting the exam. YOU MUST DECIDE HOW TO MANAGE YOUR TIME FOR THE TWO PARTS OF THE EXAM. Once you leave Part 1, you CANNOT go back to it. You will have the remaining time for Part 2. As a guide to you, the exam is designed to require approximately 1-1/2 hours for the plan reading part.</p> <p>Listed ASTM Standards may be found in <i>ASTM Standards: As Referenced in the 2012 IBC</i>, ACI Publication SP-71, or at <a href="http://www.astm.org">www.astm.org</a>. ASTM Standards are those referenced in the 2009 IBC. Test items are based on the year of issue indicated.</p> <p>For more information on the 2009 <i>Masonry Codes and Specification Compilation</i>, visit <a href="http://www.iccsafe.org/store">www.iccsafe.org/store</a>.</p>		3. TMS 402-11/ACI 530-11/ASCE 5-11 and TMS 602-11/ ACI 530.1-11/ASCE 6-11 <i>Building Code Requirements for Masonry Structures/Specification for Masonry Structures</i> Store ID: (soft-cover) 9026S11; (M) \$90; (N) \$100	
			4. <i>Reinforced Grouted Brick Masonry</i> , 15th edition, 2011 Store ID: (soft-cover) 9028S15; (M) \$31.50; (N) \$35.95
			5. <i>Reinforced Concrete Masonry Construction Inspector's Handbook</i> , 7th edition, 2010 or 8th edition, 2013 Store ID: (soft-cover) 9086S7; (M) \$35.95; (N) \$39.95
			6. <i>Model Program for Special Inspection</i> <sup>®</sup> Store ID: (soft-cover) 1035S12; (M) \$17.75; (N) \$22
			2009 <i>Masonry Codes and Specifications Compilation</i> ** ** This reference consists <b>only</b> of key portions of the 2009 IBC and 2009 IRC; TMS 402 and TMS 602 in their entirety; and <i>Model Program for Special Inspection</i> . This compilation may be used in lieu of these specifically noted individual references.
			Store ID: (soft-cover) 9620S09; (M) \$143; (N) \$159

Note: The Masonry Society (TMS) co-sponsors the Structural Masonry Special Inspector exam with the Code Council, as a national certification for masonry inspection.

## Special Inspector Examinations (continued)

### 86 Spray-applied Fireproofing Special Inspector

40 multiple-choice questions  
Exam fee: \$179  
Open book—1-1/2-hour time limit

Content Area	% of Total	References
General Requirements	20%	1. 2009 <i>International Building Code</i> ®
Materials, Preparation, Application, and Testing	80%	Store ID: (soft-cover) 3000S09; (M) \$94; (N) \$125
<b>Total</b>	<b>100%</b>	Store ID: (loose-leaf) 3000L09; (M) \$105; (N) \$141
		2. Technical Manual 12-A <i>Standard Practice for the Testing and Inspection of Field Applied Sprayed Fire-resistive Materials, an Annotated Guide</i> , 3rd edition
		Store ID: (soft-cover) 9034S97; (M) \$12; (N) \$15
		3. Technical Manual 12-B <i>Standard Practice for the Testing and Inspection of Field Applied Thin Film Intumescent Fire-resistive Materials, an Annotated Guide</i> , 2nd edition
		Store ID: (soft-cover) 9276S; (M) \$12; (N) \$15
		4. <i>Model Program for Special Inspection</i> ®
		Store ID: (soft-cover) 1035S12; (M) \$17.75; (N) \$22
<p><b>Please note:</b> This exam contains questions that refer to plans. Be sure you have the plans before starting the exam.</p>		

### 86 Spray-applied Fireproofing Special Inspector

40 multiple-choice questions  
Exam fee: \$179  
Open book—1-1/2-hour time limit

Content Area	% of Total	References
General Requirements	20%	1. 2012 <i>International Building Code</i> ®
Materials, Preparation, Application, and Testing	80%	Store ID: (soft-cover) 3000S12; (M) \$98; (N) \$131
<b>Total</b>	<b>100%</b>	Store ID: (loose-leaf) 3000L12; (M) \$111; (N) \$148
		2. Technical Manual 12-A <i>Standard Practice for the Testing and Inspection of Field Applied Sprayed Fire-resistive Materials, an Annotated Guide</i> , 3rd edition
		Store ID: (soft-cover) 9034S97; (M) \$12; (N) \$15
		3. Technical Manual 12-B <i>Standard Practice for the Testing and Inspection of Field Applied Thin Film Intumescent Fire-resistive Materials, an Annotated Guide</i> , 2nd edition
		Store ID: (soft-cover) 9276S; (M) \$12; (N) \$15
		4. <i>Model Program for Special Inspection</i> ®
		Store ID: (soft-cover) 1035S12; (M) \$17.75; (N) \$22
<p><b>Please note:</b> This exam contains questions that refer to plans. Be sure you have the plans before starting the exam.</p>		

Please visit [www.iccsafe.org/exams](http://www.iccsafe.org/exams) for expanded content outlines and the most up-to-date information. Outlines are subject to change.

Most examination references listed in this bulletin are available from the ICC Store, unless noted otherwise; product IDs are listed with the references. Pricing listed is for ICC Members (M) and non-members (N). Call 1-800-786-4452 or go to [www.iccsafe.org](http://www.iccsafe.org) and click on Store to order references. Pricing is subject to change without notice.

## Special Inspector Examinations (continued)

S1 Structural Steel and Bolting Special Inspector		90 multiple-choice questions Exam fee: \$210 Open book—3-1/2-hour time limit
Two-part examination; passing score on both parts is required		
Content Area	% of Total	References
General Requirements	11%	1. 2009 <i>International Building Code</i> <sup>®</sup>
Material Sampling, Testing, and Verification	18%	Store ID: (soft-cover) 3000S09; (M) \$94; (N) \$125
High-strength Bolting	44%	Store ID: (loose-leaf) 3000L09; (M) \$105; (N) \$141
Steel Framing Observation	27%	2. <i>Model Program for Special Inspection</i> <sup>®</sup>
<b>Total Code and Plan Reading</b>	<b>100%</b>	Store ID: (soft-cover) 1035S12; (M) \$17.75; (N) \$22
<p><b>Please note:</b> Part 1 of the exam has 60 questions that refer to the codes. Part 2 has 30 questions that refer to plans. Be sure you have the plans before starting the exam. YOU MUST DECIDE HOW TO MANAGE YOUR TIME FOR THE TWO PARTS OF THE EXAM. Once you leave Part 1, you CANNOT go back to it. You will have the remaining time for Part 2. As a guide to you, the exam is designed to require approximately 1-1/2 hours for the plan reading part.</p>		<p>3. AISC <i>Steel Construction Manual</i>, 13th or 14th edition <i>Specification for Structural Joints Using ASTM A325 or A490 Bolts</i> (by RCSC, found in Part 16) Store ID: (soft-cover) 9206S14; (M) \$175; (N) \$350</p>

S1 Structural Steel and Bolting Special Inspector		90 multiple-choice questions Exam fee: \$210 Open book—3-1/2-hour time limit
Two-part examination; passing score on both parts is required		
Content Area	% of Total	References
General Requirements	11%	1. 2012 <i>International Building Code</i> <sup>®</sup>
Material Sampling, Testing, and Verification	18%	Store ID: (soft-cover) 3000S12; (M) \$98; (N) \$131
High-strength Bolting	44%	Store ID: (loose-leaf) 3000L12; (M) \$111; (N) \$148
Steel Framing Observation	27%	2. <i>Model Program for Special Inspection</i> <sup>®</sup>
<b>Total Code and Plan Reading</b>	<b>100%</b>	Store ID: (soft-cover) 1035S12; (M) \$17.75; (N) \$22
<p><b>Please note:</b> Part 1 of the exam has 60 questions that refer to the codes. Part 2 has 30 questions that refer to plans. Be sure you have the plans before starting the exam. YOU MUST DECIDE HOW TO MANAGE YOUR TIME FOR THE TWO PARTS OF THE EXAM. Once you leave Part 1, you CANNOT go back to it. You will have the remaining time for Part 2. As a guide to you, the exam is designed to require approximately 1-1/2 hours for the plan reading part.</p>		<p>3. AISC <i>Steel Construction Manual</i>, 13th or 14th edition <i>Specification for Structural Joints Using ASTM A325 or A490 Bolts</i> (by RCSC, found in Part 16) Store ID: (soft-cover) 9206S14; (M) \$175; (N) \$350</p>

## Special Inspector Examinations (continued)

<b>S2 Structural Welding Special Inspector</b> Prerequisite Certification: <b>S1 Structural Steel and Bolting Special Inspector (must be current)</b>	90 multiple-choice questions Exam fee: \$210 Open book—3-1/2-hour time limit
Two-part examination; passing score on both parts is required.	

Content Area	% of Total	References
General Requirements	8%	1. 2009 <i>International Building Code</i> ®
Material Sampling, Testing, and Verification	22%	Store ID: (soft-cover) 3000S09; (M) \$94; (N) \$125
Structural, Reinforcing, and Sheet Steel Welding	70%	Store ID: (loose-leaf) 3000L09; (M) \$105; (N) \$141
<b>Total</b>	<b>100%</b>	2. <i>Model Program for Special Inspection</i> ® Store ID: (soft-cover) 1035S12; (M) \$17.75; (N) \$22
<p><b>Please note:</b> Part 1 of the exam has 60 questions that refer to the codes. Part 2 has 30 questions that refer to plans. Be sure you have the plans before starting the exam. YOU MUST DECIDE HOW TO MANAGE YOUR TIME FOR THE TWO PARTS OF THE EXAM. Once you leave Part 1, you CANNOT go back to it. You will have the remaining time for Part 2. As a guide to you, the exam is designed to require approximately 1-1/2 hours for the plan reading part.</p>		3. AWS Structural Welding Code: — D1.1 (2006 or 2008) - <i>Steel</i> Store ID: (soft-cover) 9054S08; (M) \$392; (N) \$435 — D1.3 (1998 or 2008) - <i>Sheet Steel</i> Store ID: (soft-cover) 9052S07; (M) \$114; (N) \$127 — D1.4 (1998 or 2005) - <i>Reinforcing Steel</i> Store ID: (soft-cover) 9053S05; (M) \$87; (N) \$97 4. ANSI/AWS A2.4-98 or A2.4-2007 <i>Standard Symbols for Welding, Brazing, and Nondestructive Examination</i> Store ID: (soft-cover) 9099S07; (M) \$144; (N) \$160 5. <i>Steel Construction Manual</i> , 14th Edition (AISC 325-11) Store ID: (hard-cover) 9206S14; (M) \$175; (N) \$350

<b>S2 Structural Welding Special Inspector</b> Prerequisite Certification: <b>S1 Structural Steel and Bolting Special Inspector (must be current)</b>	90 multiple-choice questions Exam fee: \$210 Open book—3-1/2-hour time limit
Two-part examination; passing score on both parts is required.	

Content Area	% of Total	References
General Requirements	8%	1. 2012 <i>International Building Code</i> ®
Material Sampling, Testing, and Verification	22%	Store ID: (soft-cover) 3000S12; (M) \$98; (N) \$131
Structural, Reinforcing, and Sheet Steel Welding	70%	Store ID: (loose-leaf) 3000L12; (M) \$111; (N) \$148
<b>Total</b>	<b>100%</b>	2. <i>Model Program for Special Inspection</i> ® Store ID: (soft-cover) 1035S12; (M) \$17.75; (N) \$22
<p><b>Please note:</b> Part 1 of the exam has 60 questions that refer to the codes. Part 2 has 30 questions that refer to plans. Be sure you have the plans before starting the exam. YOU MUST DECIDE HOW TO MANAGE YOUR TIME FOR THE TWO PARTS OF THE EXAM. Once you leave Part 1, you CANNOT go back to it. You will have the remaining time for Part 2. As a guide to you, the exam is designed to require approximately 1-1/2 hours for the plan reading part.</p>		3. AWS Structural Welding Code: — D1.1 (2006 or 2008) - <i>Steel</i> Store ID: (soft-cover) 9054S08; (M) \$392; (N) \$435 — D1.3 (1998 or 2008) - <i>Sheet Steel</i> Store ID: (soft-cover) 9052S07; (M) \$114; (N) \$127 — D1.4 (1998 or 2005) - <i>Reinforcing Steel</i> Store ID: (soft-cover) 9053S05; (M) \$87; (N) \$97 4. ANSI/AWS A2.4-98 or A2.4-2007 <i>Standard Symbols for Welding, Brazing, and Nondestructive Examination</i> Store ID: (soft-cover) 9099S07; (M) \$144; (N) \$160 5. <i>Steel Construction Manual</i> , 14th Edition (AISC 325-11) Store ID: (hard-cover) 9206S14; (M) \$175; (N) \$350



## Special Inspector Examinations (continued)

EC Soils Special Inspector		90 multiple-choice questions Exam fee: \$210 Open book—3-1/2-hour time limit
One-part examination		
Content Area	% of Total	References
General Requirements	18%	1. 2009 <i>International Building Code</i> <sup>®</sup>
Sampling, Classification, and Laboratory Test Results	19%	Store ID: (soft-cover) 3000S09; (M) \$94; (N) \$125
Grading Plans and Site Preparation	33%	Store ID: (loose-leaf) 3000L09; (M) \$105; (N) \$141
Fill Monitoring and Testing	30%	2. ASTM Standards:
<b>Total</b>	<b>100%</b>	ASTM D 422-63 (2002); ASTM D 698-00; ASTM D 1556-00; ASTM D 1557-02; ASTM D 2487-00 (USCS); ASTM D 2488-00; ASTM D 4318-05; ASTM D 4718-87; ASTM D 6938-06e1; ASTM D 75-03; ASTM D 4959
<p><b>Please note:</b> This exam consists of one part with a time limit of 3-1/2 hours and a total of 90 questions. This exam contains questions that refer to plans. Be sure you have the plans before starting the exam.</p> <p>Listed ASTM Standards may be found at <a href="http://www.astm.org">www.astm.org</a>. Test items are based on the year of issue indicated.</p>		<p>3. <i>Geotechnical Testing, Observation, and Documentation</i>, Tim Davis, ASCE Press, 2nd edition Store ID: (soft-cover) 9554S2; (M) \$58.50; (N) \$65</p> <p>4. <i>Model Program for Special Inspection</i><sup>®</sup> Store ID: (soft-cover) 1035S12; (M) \$17.75; (N) \$22</p> <p>5. <i>Soils, Earthwork, and Foundations: A Practical Approach</i>; <i>Based on 2012 IRC and IBC</i> Store ID: (soft-cover) 4036S12; (M) \$44.95; (N) \$56.95</p>

EC Soils Special Inspector		90 multiple-choice questions Exam fee: \$210 Open book—3-1/2-hour time limit
One-part examination		
Content Area	% of Total	References
General Requirements	18%	1. 2012 <i>International Building Code</i> <sup>®</sup>
Sampling, Classification, and Laboratory Test Results	19%	Store ID: (soft-cover) 3000S12; (M) \$98; (N) \$131
Grading Plans and Site Preparation	33%	Store ID: (loose-leaf) 3000L12; (M) \$111; (N) \$148
Fill Monitoring and Testing	30%	2. ASTM Standards:
<b>Total</b>	<b>100%</b>	ASTM D 422-63 (2002); ASTM D 698-00; ASTM D 1556-00; ASTM D 1557-02; ASTM D 2487-00 (USCS); ASTM D 2488-00; ASTM D 4318-05; ASTM D 4718-87; ASTM D 6938-06e1; ASTM D 75-03; ASTM D 4959
<p><b>Please note:</b> This exam consists of one part with a time limit of 3-1/2 hours and a total of 90 questions. This exam contains questions that refer to plans. Be sure you have the plans before starting the exam.</p> <p>Listed ASTM Standards may be found at <a href="http://www.astm.org">www.astm.org</a>. Test items are based on the year of issue indicated.</p>		<p>3. <i>Geotechnical Testing, Observation, and Documentation</i>, Tim Davis, ASCE Press, 2nd edition Store ID: (soft-cover) 9554S2; (M) \$58.50; (N) \$65</p> <p>4. <i>Model Program for Special Inspection</i><sup>®</sup> Store ID: (soft-cover) 1035S12; (M) \$17.75; (N) \$22</p> <p>5. <i>Soils, Earthwork, and Foundations: A Practical Approach</i>; <i>Based on 2012 IRC and IBC</i> Store ID: (soft-cover) 4036S12; (M) \$44.95; (N) \$56.95</p>



## Special Inspector Examinations (continued)

### 47 Reinforced Concrete Special Inspector

90 multiple-choice questions

Exam fee: \$210

Two-part examination; passing score on both parts is required

Open book—3-1/2-hour time limit

Content Area	% of Total	References
General Requirements	10%	1. 2009 <i>International Building Code</i> <sup>®</sup>
Concrete Quality	20%	Store ID: (soft-cover) 3000S09; (M) \$94; (N) \$125
Reinforcement	40%	Store ID: (loose-leaf) 3000L09; (M) \$105; (N) \$141
Formwork, Joints, and Embeds	15%	2. ACI 318-08 <i>Building Code Requirements for Structural</i>
Concrete Placement, Protection, and Curing	15%	<i>Concrete and Commentary</i>
<b>Total</b>	<b>100%</b>	Store ID: (soft-cover) 9021S08; (M) \$139.50; (N) \$174.50
<p><b>Please note:</b> Part 1 of the exam has 60 questions that refer to the codes. Part 2 has 30 questions that refer to plans. Be sure you have the plans before starting the exam. YOU MUST DECIDE HOW TO MANAGE YOUR TIME FOR THE TWO PARTS OF THE EXAM. Once you leave Part 1, you CANNOT go back to it. You will have the remaining time for Part 2. As a guide to you, the exam is designed to require approximately 1-1/2 hours for the plan reading part.</p>		<p>3. ASTM Standards A 615/A615M-04a, A 706/A 706M-05a, A 775/A 775M-04, C 31/C 31M-06, C 33/C 33M-03, C 94/C 94M-07, C 143/C 143M-08, C 150/C 150M-07, C 172-04, C 231-08c, C 685/C 685M-07</p> <p>4. <i>Model Program for Special Inspection</i><sup>®</sup></p> <p>Store ID: (soft-cover) 1035S12; (M) \$17.75; (N) \$22</p> <p>5. ICC <i>Concrete Manual</i><sup>®</sup> (2006, 2009, or 2012 edition)</p> <p>Store ID: (2012) 9090S12; (M) \$69.50; (N) \$86.95</p> <p>Above ASTM Standards may be found in <i>ASTM Standards: As Referenced in the 2009 IBC</i>, ACI Publication SP-71, or at <a href="http://www.astm.org">www.astm.org</a>. ASTM Standards are those referenced in the 2009 IBC. Test items are based on the year of issue indicated.</p>

**NOTE:** Passing the exam for the Reinforced Concrete Special Inspector does NOT certify you as a Reinforced Concrete Special Inspector.

For information on additional requirements, see the information at :

[http://www.iccsafe.org/Certification/Documents/Reinforced\\_Concrete\\_Information.pdf](http://www.iccsafe.org/Certification/Documents/Reinforced_Concrete_Information.pdf)

Sample questions are available for most examinations on our website: To get an idea of the style and format (not content) of questions on the examinations, to go [www.iccsafe.org/exams](http://www.iccsafe.org/exams), choose the category and then examination you wish to retrieve information on, then click on "Sample."

Please visit [www.iccsafe.org/exams](http://www.iccsafe.org/exams) for expanded content outlines and the most up-to-date information. Outlines are subject to change.

Most examination references listed in this bulletin are available from the ICC Store, unless noted otherwise; product IDs are listed with the references. Pricing listed is for ICC Members (M) and non-members (N). Call 1-800-786-4452 or go to [www.iccsafe.org](http://www.iccsafe.org) and click on Store to order references. Pricing is subject to change without notice.

## Special Inspector Examinations (continued)

47 Reinforced Concrete Special Inspector

90 multiple-choice questions

Exam fee: \$210

Two-part examination; passing score on both parts is required

Open book—3-1/2-hour time limit

Content Area	% of Total	References
General Requirements	10%	1. 2012 <i>International Building Code</i> ®
Concrete Quality	20%	Store ID: (soft-cover) 3000S12; (M) \$98; (N) \$131
Reinforcement	40%	Store ID: (loose-leaf) 3000L12; (M) \$111; (N) \$148
Formwork, Joints, and Embeds	15%	2. ACI 318-11 <i>Building Code Requirements for Structural</i>
Concrete Placement, Protection, and Curing	15%	<i>Concrete and Commentary</i>
<b>Total</b>	<b>100%</b>	Store ID: (soft-cover) 9021S11; (M) \$154; (N) \$192.50
<p><b>Please note:</b> Part 1 of the exam has 60 questions that refer to the codes. Part 2 has 30 questions that refer to plans. Be sure you have the plans before starting the exam. YOU MUST DECIDE HOW TO MANAGE YOUR TIME FOR THE TWO PARTS OF THE EXAM. Once you leave Part 1, you CANNOT go back to it. You will have the remaining time for Part 2. As a guide to you, the exam is designed to require approximately 1-1/2 hours for the plan reading part.</p>		3. ASTM Standards A 615/A615M-04a, A 706/A 706M-05a, A 775/A 775M-04, C 31/C 31M-06, C 33/C 33M-03, C 94/C 94M-07, C 143/C 143M-08, C 150/C 150M-07, C 172-04, C 231-08c, C 685/C 685M-07
		4. <i>Model Program for Special Inspection</i> ®
		Store ID: (soft-cover) 1035S12; (M) \$17.75; (N) \$22
		5. ICC <i>Concrete Manual</i> ® (2006, 2009, or 2012 edition)
		Store ID: (2012) 9090S12; (M) \$69.50; (N) \$86.95
		Above ASTM Standards may be found in <i>ASTM Standards: As Referenced in the 2009 IBC</i> , ACI Publication SP-71, or at <a href="http://www.astm.org">www.astm.org</a> . ASTM Standards are those referenced in the 2009 IBC. Test items are based on the year of issue indicated.

NOTE: Passing the exam for the Reinforced Concrete Special Inspector does NOT certify you as a Reinforced Concrete Special Inspector.

For information on additional requirements, see the information at :

[http://www.iccsafe.org/Certification/Documents/Reinforced Concrete Information.pdf](http://www.iccsafe.org/Certification/Documents/Reinforced_Concrete_Information.pdf)

# Reference Source

2009 International Codes	2012 International Codes	Other References
<b>2009 International Building Code</b> S—3000S09 (M) \$91.50; (N) \$122 L—3000L09 (M) \$103; (N) \$137	<b>2012 International Building Code</b> S—3000S12 (M) \$98; (N) \$131 L—3000L09 (M) \$111; (N) \$148	<b>2008 National Electrical Code</b> S—5000S08 (M) \$73; (N) \$65 L—5000L08 (M) \$69.95; (N) \$84.95
<b>2009 International Residential Code</b> S—3100S09 (M) \$79.50; (N) \$106 L—3100L09 (M) \$93.75; (N) \$125	<b>2012 International Residential Code</b> S—3100S12 (M) \$91.50; (N) \$122 L—3100L12 (M) \$107; (N) \$143	<b>2011 National Electrical Code</b> S—5000S11 (M) \$69; (N) \$77 L—5000L11 (M) \$92; (N) \$103
<b>2009 International Plumbing Code</b> S—3200S09 (M) \$58.50; (N) \$78 L—3200L09 (M) \$67.50; (N) \$90	<b>2012 International Plumbing Code</b> S—3200S12 (M) \$63; (N) \$84 L—3200L12 (M) \$73.50; (N) \$98	<b>2012 ICC Concrete Manual</b> S—9090S12 (M) \$69.50; (N) \$86.95
<b>2009 International Mechanical Code</b> S—3300S09 (M) \$55.50; (N) \$75 L—3300L09 (M) \$64.50; (N) \$85	<b>2012 International Mechanical Code</b> S—3300S12 (M) \$60; (N) \$80 L—3300L12 (M) \$69.75; (N) \$93	<b>ICC/ANSI A117.1-2003 Standard on Accessible and Usable Buildings and Facilities</b> S—9033S03 (M) \$31.95; (N) \$39.95
<b>2009 International Fire Code</b> S—3400S09 (M) \$74.25; (N) \$99 L—3400L09 (M) \$82.50; (N) \$110	<b>2012 International Fire Code</b> S—3400S12 (M) \$80.25; (N) \$107 L—3400L12 (M) \$89.25; (N) \$119	<b>ICC/ANSI A117.1-2009 Standard on Accessible and Usable Buildings and Facilities</b> S—9033S09 (M) \$35; (N) \$43.95
<b>2009 International Property Maintenance Code</b> S—3500S09 (M) \$26.25; (N) \$35	<b>2012 International Property Maintenance Code</b> S—3500S12 (M) \$29.25; (N) \$39	<b>2002 Legal Aspects of Code Administration</b> S—1007S01 (M) \$30; (N) \$33
<b>2009 International Existing Building Code</b> S—3550S09 (M) \$49.50; (N) \$66 L—3550L09 (M) \$56.25; (N) \$75	<b>2012 International Existing Building Code</b> S—3550S12 (M) \$53.25; (N) \$71 L—3550L12 (M) \$60.75; (N) \$81	<b>Basic Code Enforcement</b> S—1016S12 (M) \$30; (N) \$40
<b>2009 International Fuel Gas Code</b> S—3600S09 (M) \$55.50; (N) \$74 L—3600L09 (M) \$64.50; (N) \$86	<b>2012 International Fuel Gas Code</b> S—3600S12 (M) \$60; (N) \$80 L—3600L12 (M) \$69.75; (N) \$93	<b>2010 ANSI/ASHRAE/IES Standard 90.1</b> S—9568S10 (M) \$112; (N) \$125
<b>2009 International Energy Conservation Code</b> S—3800S09 (M) \$30; (N) \$40	<b>2012 International Energy Conservation Code</b> S—3800S12 (M) \$33; (N) \$44	<b>2008 ICC 700 National Green Building Standard</b> S—9551S08 (M) \$31.95; (N) \$35.95
	<b>2012 International Green Construction Code</b> S—3750S12 (M) \$107; (N) \$142	<b>2010 Building Department Administration</b> H—1013S4 (M) \$89.95; (N) \$112

**NOTES on abbreviations:**

- S = soft-cover; L = loose-leaf; H = hard-cover; D = download
- (M) = Member pricing; (N) non-Member pricing

Other References	Other References
<a href="#">ACI 318-08 Building Code Requirements for Structural Concrete and Commentary</a> S—9021S08 (M) \$139.50; (N) \$174.50	<a href="#">2010 NFPA 13 Standard for the Installation of Sprinkler Systems</a> S—9406S10 (M) \$77.50; (N) \$86
<a href="#">ACI 318-11 Building Code Requirements for Structural Concrete and Commentary</a> S—9021S11 (M) \$154; (N) \$192.50	<a href="#">2007 NFPA 13D Standard for the Installation of Sprinkler Systems in One- and Two-family Dwellings and Manufactured Homes</a> S—9430S07 (M) \$37; (N) \$41
<a href="#">SSTD 10-99 Standard for Hurricane Resistant Residential Construction</a> D—8744P99 (M) \$27; (N) \$34	<a href="#">2010 NFPA 13D Standard for the Installation of Sprinkler Systems in One- and Two-family Dwellings and Manufactured Homes</a> S—9430S10 (M) \$37; (N) \$41
<a href="#">FEMA 499 Home Builder's Guide to Coastal Construction Fact Sheets</a> S—1376S (M) \$12; (N) \$15	<a href="#">2007 NFPA 72 National Fire Alarm Code</a> S—9435S07 (M) \$77.50; (N) \$86
<a href="#">ASCE/SEI 24-05 Flood Resistant Design and Construction</a> S—9020S05 (M) \$53; (N) \$59	<a href="#">2010 NFPA 72 National Fire Alarm Code</a> S—9435S10 (M) \$77.50; (N) \$86
<a href="#">2001 Wood Frame Construction Manual for One- and Two-family Dwellings and Commentary to the WFCM</a> S—9104S01 (M) \$54; (N) \$60	<a href="#">Human Resource Management: An Essential Guide</a> H—9623S3 (M) \$83; (N) \$92
<a href="#">ATC-45 Field Manual: Safety Evaluation of Buildings After Windstorms and Floods</a> S—9345S (M) \$26; (N) \$29	<a href="#">A Budgeting Guide for Local Government</a>
<a href="#">ATC-20 and 20-2 Procedures for Postearthquake Safety Evaluation of Buildings and Addendum</a> S—9364S (M) \$38; (N) \$42	<a href="#">2000 Field Procedures Manual for Unbonded Single Strand Tendons, 3rd edition</a> S — 9630S-PT1 M10.3-00; (M) \$26; (N) \$29
<a href="#">ATC 20-1 Field Manual: Postearthquake Safety Evaluation of Buildings</a> S—9365S (M) \$23; (N) \$26	<a href="#">2000 Specifications for Unbonded Single Strand Tendons, 2nd edition</a> S — 9631S-PT1 M10.2-00; (M) \$26; (N) \$29

**NOTES on abbreviations:**

- S = soft-cover; L = loose-leaf; H = hard-cover; D = download
- (M) = Member pricing; (N) non-Member pricing

**Certified Membership Application** An individual who holds a current ICC certification. PLEASE PRINT ALL INFORMATION CLEARLY.
 **One Year Membership \$100**       **Two-Year Discount \$170**       **Three-Year Discount \$240**

ICC Certification Number (list only one): # \_\_\_\_\_ Exp. \_\_\_\_\_

 MR.  
 MS.

NAME \_\_\_\_\_

TITLE \_\_\_\_\_

E-MAIL \_\_\_\_\_

ORGANIZATION/JURISDICTION \_\_\_\_\_

PHONE (SPECIFY COUNTRY AND CITY CODE IF OUTSIDE THE U.S.) \_\_\_\_\_ EXT. \_\_\_\_\_ FAX (SPECIFY COUNTRY AND CITY CODE IF OUTSIDE THE U.S.) \_\_\_\_\_

SHIPPING ADDRESS \_\_\_\_\_

CITY \_\_\_\_\_

STATE/PROVINCE \_\_\_\_\_ ZIP/POSTAL CODE \_\_\_\_\_ COUNTRY \_\_\_\_\_

BILLING ADDRESS (IF DIFFERENT) \_\_\_\_\_

CITY \_\_\_\_\_

STATE/PROVINCE \_\_\_\_\_ ZIP/POSTAL CODE \_\_\_\_\_ COUNTRY \_\_\_\_\_

 Check here if you would like to receive information about ICC products and services via:  Fax  E-mail

**Payment Information** Annual membership dues must be prepaid with check, money order, or credit card and submitted with application.

**Enclosed is my:**  CHECK (*Payable to ICC*)       MONEY ORDER

**Charge my:**  VISA®  MASTERCARD®  DISCOVER®  AMERICAN EXPRESS® Please apply this total amount to my credit card: \$ \_\_\_\_\_

CREDIT CARD NUMBER \_\_\_\_\_ EXP. DATE \_\_\_\_\_

CARDHOLDER'S NAME \_\_\_\_\_ SIGNATURE \_\_\_\_\_

If you filled out this application in response to an ICC flyer or ad, please indicate the Tracking Number (located in black box in lower left corner): # \_\_\_\_\_

**NEW Members only—select to receive one code book below, included with first year's fee:**

- |   |  |
|---|--|
| <input type="checkbox"/> 2012 International Building Code® ( <input type="checkbox"/> soft cover or <input type="checkbox"/> loose leaf)    | <input type="checkbox"/> 2012 International Property Maintenance Code® ( <i>soft cover only</i> )                                  |
| <input type="checkbox"/> 2012 International Residential Code® ( <input type="checkbox"/> soft cover or <input type="checkbox"/> loose leaf) | <input type="checkbox"/> 2012 ICC Performance Code™ for Buildings and Facilities ( <i>soft cover only</i> )                        |
| <input type="checkbox"/> 2012 International Plumbing Code® ( <input type="checkbox"/> soft cover or <input type="checkbox"/> loose leaf)    | <input type="checkbox"/> 2012 International Wildland-Urban Interface Code™ ( <i>soft cover only</i> )                              |
| <input type="checkbox"/> 2012 International Mechanical Code® ( <input type="checkbox"/> soft cover or <input type="checkbox"/> loose leaf)  | <input type="checkbox"/> 2012 International Zoning Code® ( <i>soft cover only</i> )  |
| <input type="checkbox"/> 2012 International Fire Code® ( <input type="checkbox"/> soft cover or <input type="checkbox"/> loose leaf)        | <input type="checkbox"/> 2012 International Private Sewage Disposal Code® ( <i>soft cover only</i> )                               |
| <input type="checkbox"/> 2012 International Fuel Gas Code® ( <input type="checkbox"/> soft cover or <input type="checkbox"/> loose leaf)    | Other select ICC codes may be substituted, based on availability. Would you prefer a 2009 edition or regional code? Specify below: |
| <input type="checkbox"/> 2012 International Energy Conservation Code® ( <i>soft cover only</i> )  | _____  |
| <input type="checkbox"/> 2012 International Existing Building Code® ( <i>soft cover only</i> )  | _____  |

**Submitting the Application** There are four easy ways to submit this completed application along with payment or credit card information.

**1. FAX:** (205) 591-0775

**2. MAIL:** International Code Council  
 900 Montclair Road  
 Birmingham, AL 35213

**3. CALL:** 1-888-ICC-SAFE  
 (422-7233), x33804

**4. SCAN & EMAIL:**  
 members@iccsafe.org



# ORDER FORM: U.S. ADDRESSES ONLY

TO ORDER BY **PHONE:** 1-800-786-4452 • Mon – Fri, 8 am – 7 pm CT

TO ORDER BY **FAX:** 1-866-891-1695

TO ORDER BY **MAIL:** 25442 Network Pl., Chicago, IL 60673-1254

TO ORDER **ONLINE:** www.iccsafe.org

**ICC Members:** Provide your ICC member number to receive discount pricing \_\_\_\_\_ **Date** \_\_\_\_ / \_\_\_\_ / \_\_\_\_

**Bill To:** (Please Print) Person ordering \_\_\_\_\_

**Ship To:** (If different from "Bill To" address or outside of U.S.) (Please Print)

Company or Jurisdiction \_\_\_\_\_

Company or Jurisdiction \_\_\_\_\_

Attn: \_\_\_\_\_

Attn: \_\_\_\_\_

e-mail: \_\_\_\_\_

Street \_\_\_\_\_

Street \_\_\_\_\_

City \_\_\_\_\_ State \_\_\_\_\_

City \_\_\_\_\_

Zip/Postal Code \_\_\_\_\_

State \_\_\_\_\_ Zip \_\_\_\_\_ Daytime phone ( \_\_\_\_\_ ) \_\_\_\_\_

**CHECK IF YOU WOULD LIKE ADDITIONAL INFORMATION**

- Membership Application  Certification information  Product Catalog  Seminar information

**PRICES SUBJECT TO CHANGE.**

Item Number	Qty	List Price, Each	Member Price, Each	Description (specify edition)	Total

**Method of Payment:** (Nonmembers of ICC must prepay by credit card, check or money order.)

- Check or money order  Bill my Membership No.

Purchase Order No.: \_\_\_\_\_  
(COPY OF AUTHORIZED P.O. REQUIRED)

- MasterCard  VISA  Discover  American Express

CVV# (3- or 4-digit security code printed on card) \_\_\_\_\_

Card No. \_\_\_\_\_ / \_\_\_\_\_ / \_\_\_\_\_ / \_\_\_\_\_ Expires \_\_\_\_\_ / \_\_\_\_\_

Name as it appears on card: \_\_\_\_\_

Signature (required) \_\_\_\_\_

**Shipping Rates**

Order Subtotal	Shipping Charge
----------------	-----------------

**U.S. Shipping, Continental 48**

Up to \$25, 10–15 day Media Mail. . . . . \$4  
 Up to \$25, 3–10 day UPS/FedEx Ground (no P.O. Boxes) . . . . . \$8  
 \$25.01 to \$50 . . . . . \$9  
 \$50.01 to \$100 . . . . . \$10  
 \$100.01 to \$200 . . . . . \$13  
 \$200.01 to \$500 . . . . . \$16  
 \$500.01 and more . . . . . 4% of subtotal

**AK, HI and U.S. Territories Shipping**

Up to \$25 . . . . . \$6  
 \$25.01 to \$200 . . . . . \$15  
 \$200.01 to \$500 . . . . . \$30  
 \$500.01 and more . . . . . 8% of subtotal

**International Shipping**

Canada and Mexico . . . . . 20% of subtotal  
 All Other Countries . . . . . \$25+20% of subtotal  
**International shipping rates may vary.**  
**Deliveries to remote areas may be delayed.**

**Call for Express Delivery.**

Subtotal

Shipping

Sales Tax

**TOTAL PAYMENT**

All payments in U.S. Funds.

**SALES TAX:** AL, AZ, CA, CO, CT, DC, FL, GA, HI, IA, ID, IL, IN, KS, KY, LA, MA, MD, ME, MI, MN, MO, MS, NC, ND, NJ, NM, NV, NY, OH, OK, PA, RI, SC, SD, TN, TX, UT, VA, VT, WA and WI add applicable sales tax.

**Returns and Refunds**

Products may be returned in new, resalable condition within 30 days with proof of purchase. A restocking fee of 20 percent of the original selling price will be imposed on accepted returns. All returns must have written authorization from ICC. No refunds are made for software, audio or video products. Defective items may be exchanged only for the same titles or editions. Please call 1-800-786-4452 for complete details.

ICC USE ONLY

## ORDERING IS EASY!



**PHONE:** 1-800-786-4452  
Mon–Fri, 8 am to 7 pm CT

**FAX:** 1-866-891-1695

**ON LINE:** [www.iccsafe.org](http://www.iccsafe.org)

**E-MAIL:** [order@iccsafe.org](mailto:order@iccsafe.org)

**MAIL:** International Code Council  
25442 Network Pl.  
Chicago, IL 60673-1254  
USA

### ORDERING INFORMATION

**Member discount and billing:** Member discount prices are offered to current ICC members only. All members must use their membership number on each order to receive the discount pricing. Orders must be prepaid or charged to a credit card. All orders are to be paid in U.S. funds. Returned checks are subject to a \$25 service charge.

**Shipping and Handling:** Orders are shipped postage paid via FedEx, UPS or USPS unless otherwise specified. A complete address must be given for each order. Please refer to the order form for shipping charges.

**International orders:** For faster service, please pay by credit card. All international orders must be prepaid in U.S. funds. Please allow six to eight weeks for first-class mail service. Express delivery and wire transfers are available; please call 1-800-786-4452 for pricing information.

Proof of I.D. may be required.

### QUANTITY DISCOUNTS

Reduced pricing is available for products published by ICC. These products are noted with “Q” in the Index. The schedule of discounts is as follows:

- 25 to 49 copies of a single item ..... 5% discount
- 50 to 99 copies of a single item..... 10% discount
- 100 or more copies of a single item.. 15% discount

Quantity discount **does not** apply to Package Deals, Bundles, Collections, Combos, Logo items, or products that are not published by ICC.

### RETURN AND REFUND POLICY

Products may be returned in new, resalable condition within 30 days. Claims for shortages or damage must be made within 5 days of receipt of merchandise. All returns must include an ICC Return Authorization number. Call 1-888-422-7233, x33801 to receive your Return Authorization number. A copy of a paid invoice, a canceled check for the amount of purchase, or other proof of purchase must accompany the shipment of all returns. Unauthorized returns will be delayed in processing and may not be accepted for credit and/or may get returned to the customer.

All returns are subject to a restocking fee of 20 percent of the original selling price. No refund will be issued on overpayments less than \$5.

Returned merchandise must be shipped prepaid to the ICC Distribution Center, 11711 W. 85<sup>th</sup> St., Lenexa, KS 66214. It is strongly recommended that returned merchandise be shipped through UPS to ensure prompt and efficient delivery because materials shipped at book rate are not traceable through the USPS.

No refunds are made for software, audio or video products. Defective software, audio or video items may be exchanged only for the same titles or editions as the defective item.

If you have any questions on these policies, please call 1-800-786-4452 and ask for a customer service representative.





# ORDER FORM: INTERNATIONAL ADDRESSES ONLY

TO ORDER BY **PHONE:** 001-708-799-2300, x33801, Mon-Fri, 8 a.m.-7 p.m. CT

TO ORDER BY **FAX:** 001-708-799-4981

TO ORDER BY **MAIL:** 25442 Network Pl., Chicago, IL 60673-1254, USA

TO ORDER **ONLINE:** www.iccsafe.org

**All International Orders must be prepaid in U.S. Funds drawn on a U.S. Bank.** We gladly accept payment by MasterCard,

Visa, American Express, Discover, JCB or a check/money order denominated in U.S. dollars and drawn on a U.S. bank. All prices are quoted in U.S. dollars.

**DATE** \_\_\_\_ / \_\_\_\_ / \_\_\_\_

**Ship To:** (Please Print) Person ordering \_\_\_\_\_  
 Company or Jurisdiction \_\_\_\_\_  
 Attn: \_\_\_\_\_  
 Street \_\_\_\_\_  
 City \_\_\_\_\_  
 State/Province \_\_\_\_\_ Postal Code \_\_\_\_\_  
 Country \_\_\_\_\_ Daytime Phone \_\_\_\_\_  
 E-mail \_\_\_\_\_

**ICC Members:**  
 Provide your member number to receive discount pricing  
 \_\_\_\_\_

**CHECK BOX IF YOU WOULD LIKE ADDITIONAL INFORMATION**  
 Membership Application    Certification information  
 Product Catalog    Seminar information

PRICES SUBJECT TO CHANGE.

Item Number	Qty	List Price, Each	Member Price, Each	Description (specify edition)	Total

**Method of Payment:** (Nonmembers of ICC must prepay by credit card, check or money order.)

Check or money order    Bill my Membership No.

Purchase Order No.: \_\_\_\_\_  
(COPY OF AUTHORIZED P.O. REQUIRED)

MasterCard    VISA    Discover    American Express

CVV# (3- or 4-digit security code printed on card) \_\_\_\_\_

Card No. \_\_\_\_/\_\_\_\_/\_\_\_\_/\_\_\_\_ Expires \_\_\_\_/\_\_\_\_

Name as it appears on card: \_\_\_\_\_

Signature (required) \_\_\_\_\_

**International Shipping**

**Standard:**  
 Canada and Mexico.....20% of subtotal  
 All Other Countries .. \$25+20% of subtotal

**Call for Express Delivery**

**Billed:**  
 FedEx    UPS

Acct. # \_\_\_\_\_

**Deliveries to remote areas may be delayed.**

SUBTOTAL \_\_\_\_\_

SHIPPING \_\_\_\_\_

**TOTAL PAYMENT** All payments in U.S. Funds.

**\*Wire Transfers**  
 Add \$25 (U.S.) for bank fees.  
 Wire to: JP Morgan Chase Bank, N.A.  
 ABA 0210-00021  
 Acct. #935163733  
 SWIFT Code: CHASUS33  
 Date funds sent: \_\_\_\_/\_\_\_\_/\_\_\_\_

Please send email notification of transfer to:  
[collections@iccsafe.org](mailto:collections@iccsafe.org)

ICC USE ONLY

12-05892 04/12

*Thank you for your order!*



## INTERNATIONAL ORDERING IS EASY!



**PHONE:** 001-708-799-2300, x33801  
Mon–Fri, 8 am to 7 pm CT

**FAX:** 001-708-799-4981  
Mon–Fri, 8 am to 7 pm CT

**ON LINE:** [www.iccsafe.org](http://www.iccsafe.org)

**E-MAIL:** [order@iccsafe.org](mailto:order@iccsafe.org)

**MAIL:** International Code Council  
25442 Network Pl.  
Chicago, IL 60673-1254  
USA

### Ordering Information

All ICC members must use their membership number on each order to receive discount pricing. Orders must be prepaid or charged to a credit card. All orders are to be paid in U.S. funds. Returned checks are subject to a \$25 service charge. Proof of identification may be required.

#### SHIPPING AND HANDLING

Orders are shipped postage-paid via FedEx, UPS or USPS unless otherwise specified.

#### INTERNATIONAL ORDERS

For faster service, please pay by credit card. All international orders must be prepaid in U.S. funds. Please allow six to eight weeks for first class mail service. Express delivery and wire transfers are available; please call 001-708-799-2300, x33801, for pricing information.

#### RETURN POLICY

Products can be returned in new, resalable condition within 30 days. Call 001-708-799-2300, x33801, for details.

All prices subject to change without notice. All items subject to availability.

